



**GREENPLY INDUSTRIES LIMITED**

Decorative Division, 1501-1505, Narain Manzil,  
23, Barakhamba Road, New Delhi – 110001, India.  
Tel: (91) 11 42791399. E-mail: info@greenlam.com  
Website: www.greenlam.co.in



[www.facebook.com/greenlamlaminate](http://www.facebook.com/greenlamlaminate)



[www.twitter.com/greenlam01](http://www.twitter.com/greenlam01)



[www.youtube.com/greenlamlaminates](http://www.youtube.com/greenlamlaminates)



[www.greenlam.co.in](http://www.greenlam.co.in)

Vol. 1 FEB 2014/SP



GREENLAM COLLECTION  
**MEDLEY 2014**

[www.greenlam.co.in](http://www.greenlam.co.in)



**MEDLEY**  
2014



WATCH OUT FOR  
**34 NEW SHADES**  
AS THE GREENLAM  
NEW ARRIVALS.

**34**

Grunge, meshes,  
oakish, ashlike -  
We will storm your  
world with  
overwhelming  
ideas of décor.



A COMPLETE ASSORTMENT OF  
DESIGNER LAMINATES, PRESENTING:

**MEDLEY**  
THE GREENLAM COLLECTION

*A beautiful cascade of  
the trendiest styles...  
A cocktail of patterns...  
A concoction of contrasts...  
A colourful cosmos...*





The amount of detail is elemental to creating soulful designs. Be it the woods, abstracts, metallics, textured designs or even exquisite offerings like anti-bacterial and post forming laminates, each one of these brings realism to elegance, with a precision that is unique to GREENLAM's assortment.

A TOUCH OF CLASS FOR

# FINER THINGS OF LIFE



*Enter a world of artful infinity with the Greenlam style.*





Greenlam is the undisputed market leader in decorative laminates in Asian markets with a strong presence across the globe in over 100 countries from USA to Singapore, and UK to UAE. We offer an exhaustive range of ecofriendly laminates in mesmerizing colours, textures and patterns inspired out of a chic and upscale sense of style, inherent to us. We intend to continue surprising lives with designs that have fashion and personality. New benchmarks are in the offing for the world to see.

**GREENLAM**  
**A COMPANY WITH A GREEN DNA.**  
**A BRAND WITH INCREDIBLE FASHIONALITY.**

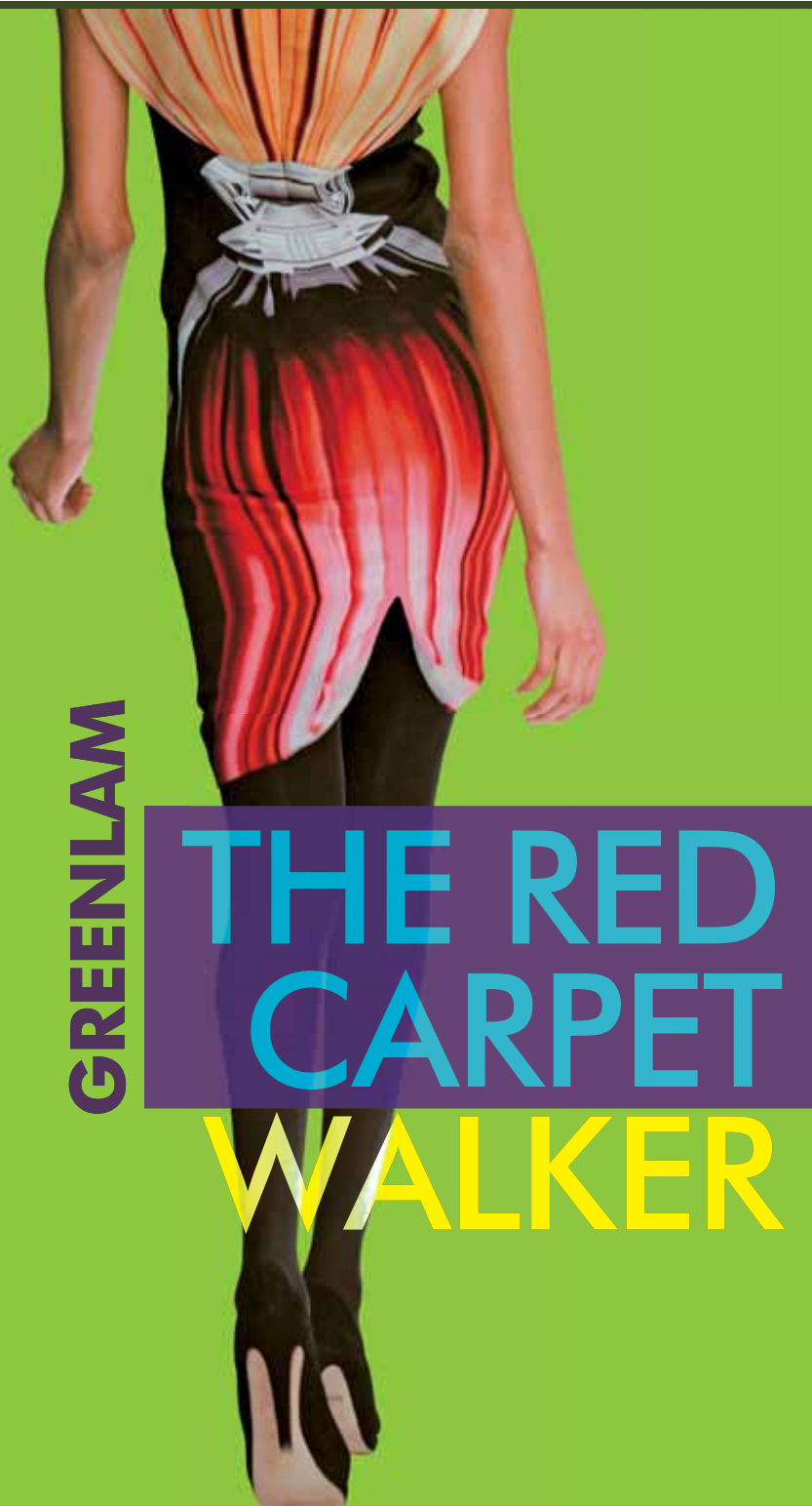
**10 + 1 REASONS**

WHAT MAKES GREENLAM THE BEST CHOICE?



- 1 Antibacterial Range**  
ENTIRE RANGE OF GREENLAM IS ANTIBACTERIAL.
- 2 Green Product**  
SUPERIOR MANUFACTURING PROCESS HAS EARNED GREENGUARD & GREEN LABEL CERTIFICATIONS
- 3 10 Year Product Warranty**  
EVERY PRODUCT IS FREE FROM MANUFACTURING DEFECTS AND PERFECTLY FIT FOR USE.
- 4 Premium Paper's & Textures**  
USE OF 100% IMPORTED PREMIUM PAPERS & TEXTURES SOURCED FROM EUROPE, JAPAN ETC. ENSURES LONGEVITY OF LAMINATES.
- 5 Quality Product**  
STATE OF THE ART MANUFACTURING FACILITY PROVIDES A PRODUCT THAT COMPLIES WITH QUALITY STANDARDS LIKE ISO 9001, ISO 14001, OHSAS 18001, DIN EN 438, BS 438, NEMA LD3 -2005 AND BIS 2046-1995.
- 6 Colour Consistency**  
EQUIPPED WITH ADEQUATE TECHNOLOGY, WE DELIVER EVERY COLOUR ACROSS WIDE APPLICATIONS, WITH PRECISION.
- 7 Largest Exports**  
AWARDED THE COVETED LARGEST LAMINATE EXPORTER FROM INDIA.
- 8 Asia's Largest**  
INTERIOR INFRASTRUCTURE COMPANY.
- 9 A Global Brand**  
WITH WORLDWIDE PRESENCE ACROSS 100 COUNTRIES AND MORE.
- 10 A Big Team**  
WITH WIDE SPREAD OF SALES FORCE IN MORE THAN 75 MAJOR TOWNS AND CITIES ACROSS INDIA.
- 11 Strongest Distribution Network (Pan India)**  
WITH A COORDINATED AND CONSTANT SUPPLY CHAIN ALL ACROSS THE COUNTRY.





**GREENLAM**

# THE RED CARPET WALKER



We are proud of our **GREENGAURD** Certification from the UL Environment, **US and GREENLABEL** certification from Singapore Environmental Council. This means that each of our spectacular laminates emits surprisingly low levels of chemicals, even after prolonged usage.

Greenlam has several laurels to its name like **ISO 9001, ISO 14001, OHSAS 18001** Certifications. Our products also meet the rigid international quality standards namely **NEMA of US and BS of United Kingdom**.

We are the only laminates company in world that trades carbon credits earned with our practices. That is because we believe in making incessant efforts to reduce our carbon footprint through constructive measures.

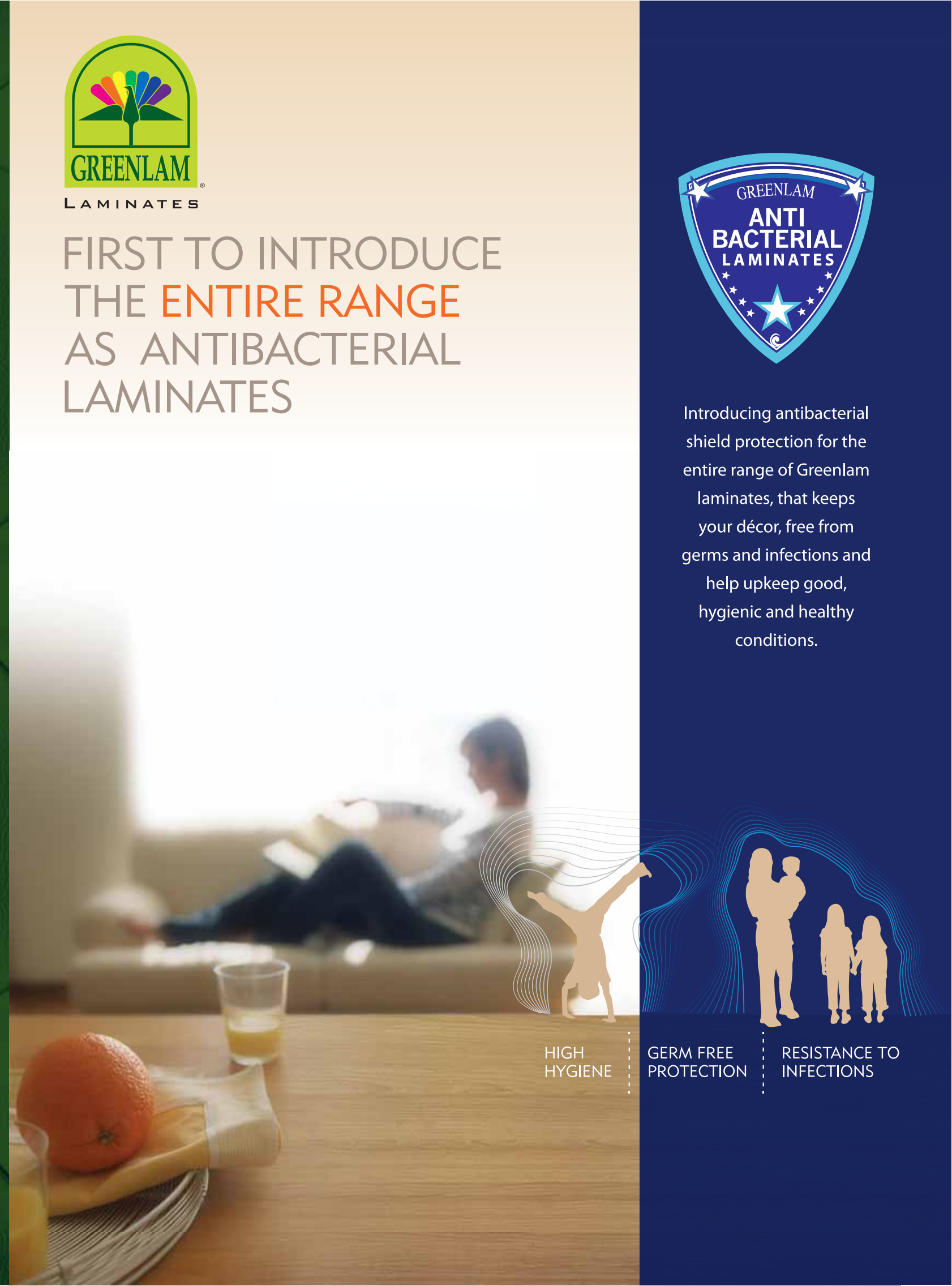
It is available in 1mm and 1.5mm thicknesses more sizes custom made to suit various indoor design requisites include 3'X7', 4.25'X10', 5'X12' for laminates and 5'X6', 6'X12' for compacts.



## FIRST TO INTRODUCE THE ENTIRE RANGE AS ANTIBACTERIAL LAMINATES



Introducing antibacterial shield protection for the entire range of Greenlam laminates, that keeps your décor, free from germs and infections and help upkeep good, hygienic and healthy conditions.



HIGH HYGIENE

GERM FREE PROTECTION

RESISTANCE TO INFECTIONS



# New Arrivals

INCREDIBLE INAUGURALS & REVIVALS

*Eight new styles. 34 new shades... are born.*

Our NEWBORNS make NEWS. Storming into the world of décor, overwhelming your imagination. Purely driven by instincts, this time we revive some of the old favourites while inaugurating some completely unseen styles, in laminates. Grunge, meshes, oakish, ashlike, you can dwell upon our word, this new population is of heartthrobs you will fall for!

Marmoreal

Mesh

Country Wood

Chased Wood

Super Gloss

Oak Lumber

Elmo

Linear Hush





## CHASED WOOD

### Woods Textured

Truly, raw and rare. Chasing the wood reveals unseen patterns. Stirring up classics with the contemporary, each rough-cut texture, of the Split Oak and also the clean quarter-cut Ash, is matchless.



5310 White Ash (CHS)



5081 Snuff Elm (SGL)

## SUPER GLOSS

### Woods Textured

Gloss has been and is still in fashion. It's catching up everywhere; wardrobes, kitchens, consoles etc. The new Elms and Oaks add freshness to this trend.



5078 Esoteric Oak



5314 Urbane Banana (CTR)

## COUNTRY WOOD

### Woods Textured

Raw and rustic oakwood style, straight out of Oaks and special Banana woods, pair up with a little gloss and glamour, to bring grunge back to interiors. Alongwith that true country feel.

## OAK LUMBER

### Woods Standard

A classic favourite, Oak Lumber is being reintroduced in our new collection on popular demand. It flaunts all natural characteristics of oakwood yet it is not too bold.



# NEW ARRIVALS

# 8 NEW STYLES 34 NEW SHADES



5570 Bronze Mesh

## MESH



### Abstracts

Dress your décor in your favourite fabrics. In fine threads like meshes reminding you of the Thai Silks, the Tweeds or the Linens. In the most earthy colours.



5571 Crème Marquina (STN)



## MARMOREAL

### Abstracts

Stone look is back in trend. The Italian marble texture, here, is as real and raw as it could get. Dished out in classic colours.



## LINEAR HUSH

### Woods Standard

'Hush' they are, as they only slightly hint at the natural wood pattern. 5524 Samara Oak & 5526 Ironside Oak designs are launched in vertical patterns as well.



5080 Pure Elm



5082 Louisiana Oak

## ELMO



### Woods Standard

Capturing the detail in their beautiful design, here's a contemporary wood style which offers a rare simplicity.



# NEW ARRIVALS

# 8 NEW STYLES 34 NEW SHADES



## ABSTRACTS PG. NO

Mesh	7
Marmoreal	8
Fabric	9
Elegant Tweeds	10
Caravan Leather	11
Moonstruck Pearl	12
Coffee Sack	13
Rustics	14
Lateral Spirits	15
Bamboo	16
Florence	17
Cosmo Motifs	19
Paisley	20

## WOODS STANDARD PG. NO

Elmo	51
Oak Lumber	52
Prunus	53
Soul Timber	54
Austro Kenyan Woods	55
Venetian Antiques	56
Linear Hush	57
Horizontal Hush	58
Wooden Symphony	60

## SOLIDES TEXTURED PG. NO

Raffia	75
Parallel Streaks	76
Ruffled Feather	77
Onda Horizontal & Vertical	78
Pacific Trail	79
Raw Silk	79
Blazing Delight	80
Retro	81
Summer Blooms	82
Edgy Ash	83
Alluring Alligator	83
Nappa Leather	84
Super Gloss	85
Techno Steel	86

## WOODS TEXTURED PG. NO

Super Gloss	31
Country Wood	33
Chased Wood	35
Handscraped	37
Assorted	40
Raffia	41
Raw Silk	42
Pacific Trail	43
Ruffled Feather	45
Parallel Streaks	47
Edgy Ash	48
Quarter Cut Oak	49

## SPECIALITY PRODUCTS PG. NO

<u>MIRROR TRANCE</u>	<u>107</u>
<u>GROOVY DIGITAL</u>	<u>107</u>
<u>UNICORE</u>	<u>108</u>
<u>CUSTOM LAMINATES</u>	<u>108</u>
<u>POST FORMING LAMINATES</u>	<u>109</u>
<u>COMPACT GRADE</u>	<u>109</u>
<u>CHEMICAL RESISTANT COMPACT</u>	<u>110</u>
<u>RESTROOM CUBICLES</u>	<u>110</u>
<u>FIRE RETARDANT LAMINATES</u>	<u>111</u>
<u>COMPOSITE PANEL</u>	<u>111</u>
<u>CHALK &amp; MARKER GRADE</u>	<u>111</u>
<u>GREEN DECOLINER</u>	<u>112</u>
<u>DOOR SPECIALS</u>	<u>112</u>
<u>SWITCH BOARD PANEL</u>	<u>112</u>

## SOLIDS STANDARD

Popular Colors	87
Solids Symphony	91

## METALLIC MARVELS PG. NO

97

### SYMBOLS USED

- PF** Design available in Post Forming grade also
- D** Greenlam Doors Special also available in 3' x 7'
- C** Compact Laminates also available in 6' x 12'
- L** Design also available in 4.25' x 10'
- XL** Design also available in 5' x 12'
- NEW** New Design



# ABSTRACTS

**INNOVATING WITH RANDOMNESS, PRESENTING A WIDE RANGE OF RAREST PATTERNS. EVERY INDIVIDUAL SHADE IS AN ART IN ITSELF, NOTHING LESS THAN SOME HEART-MELTING PIECE OF WORK FROM A CELEBRATED ARTIST. PUT TOGETHER, THEY CREATE A MATCHLESS ENSEMBLE.**



**TEXTILES**  
Mesh  
Elegant Tweeds  
Fabric  
Caravan Leather

**STONE**  
Marmoreal

**PEARLESCENTS**  
Moonstruck Pearl

**EARTHEN**  
Coffee Sack  
Rustics

**LINEAR**  
Lateral Spirits  
Bamboo

**MOTIFS**  
Florence  
Paisley  
Cosmo Motifs



# GLAM COMBINATIONZ









# MESH

## Textiles

Dress your décor in your favourite fabrics. In fine threads-like meshes reminding you of the Thai Silks, the Tweeds or the Linens. In the most earthy colours.

A

B



NEW 5566 Clear Mesh

NEW 5567 Grey Mesh

C



NEW 5570 Bronze Mesh

2



NEW 5568 Smoky Mesh



NEW 5569 Earthen Mesh



Exclusively available with Greenlam

# MARMOREAL

## Stone

Stone look is back in trend. The Italian Marble texture here, is as real and raw as it could get. Dished out in classic colours.

A

B

C



NEW 5572 Grey Marquina (STN)

NEW 5573 Tanned Marquina (STN)



NEW 5571 Crème Marquina (STN)

Exclusively available with Greenlam



# FABRIC

## Textiles

A



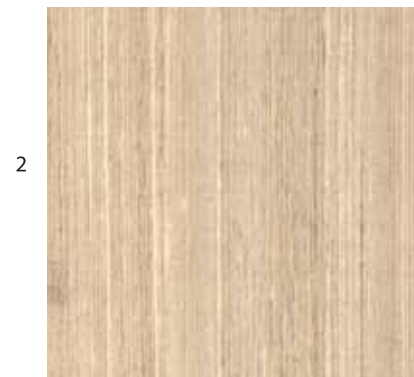
5555 Thai Tan Silk

B



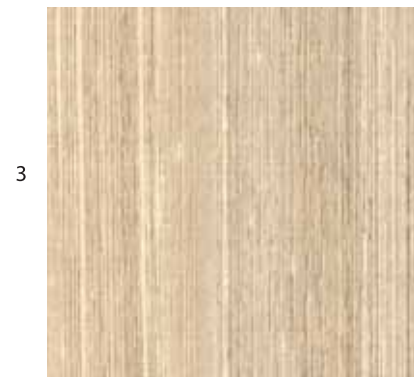
5555 Thai Tan Silk (WWR)

1



5551 Thai Almond Silk

2



5551 Thai Almond Silk (WWR)

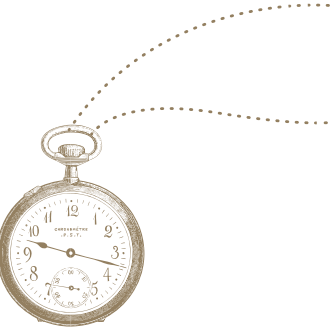
3



Recommended for vertical applications only

# ELEGANT TWEEDS

## Textiles



A



503 Mod Twine (TXM)

1

B



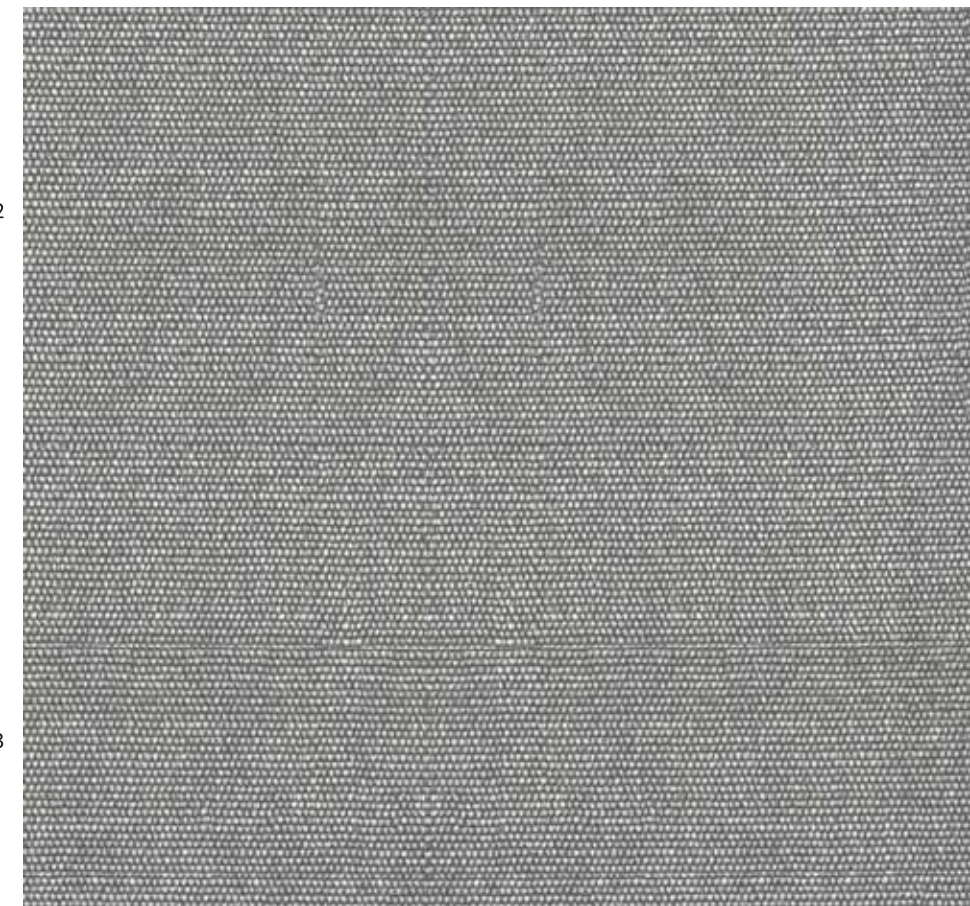
504 Earthy Elite (TXM)

C



504 Earthy Elite (EP)

2

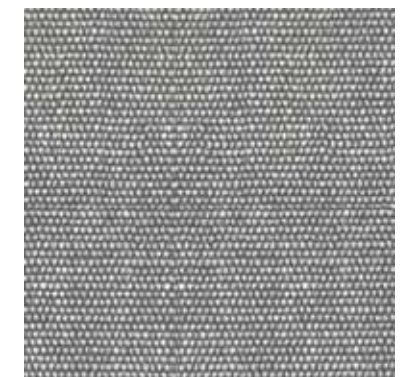


505 Livid Ecstasy (TXM)

3



503 Mod Twine (EP)



505 Livid Ecstasy (EP)

Exclusively available with Greenlam





A

B

1

2

5562 Scarlet (CRL)

5561 Candy Orange (CRL)

5563 Dusk (CRL)

**CARAVAN LEATHER™**  
 Textiles

Exclusively available with Greenla



A

C

B

D

1

2

3

4

901 Calcino

921 Graphite

923 Meta Silver **L M C**

924 Meta Copper

928 Metaline

929 Metaline Grey **L M C**

946 Shell

948 Black Sea Pearl **L**



**MOONSTRUCK PEARL**  
 Pearlescents

Recommended for vertical applications only



# COFFEE SACK

---

## Earthen

A



556 Café Noir (TXM)

B



557 Café au Lait (TXM)

A



553 Silver Rubble (STN)

B



554 Sear Reef (STN)

C



555 Bronze Gravel (STN)

1

2



5854 Copper Taint (STN)



5856 Steel Oxid (STN)

# RUSTICS

---

## Earthen



Exclusively available with Greenlam



# LATERAL SPIRITS

Linear

A



5556 Chrome Gush (PTR)

B



5558 Royal Aisle (PTR)

1

2



5557 Rouge Route (PTR)



5559 Tawny Trail (PTR)

# BAMBOO

Linear

A



5531 Auburn Bamboo

B



5532 Fresh Bamboo

1





# FLORENCE

## Motifs

A



B



551 Vivid Flora (TST)

552 Café Flora (TST)





A



B



A

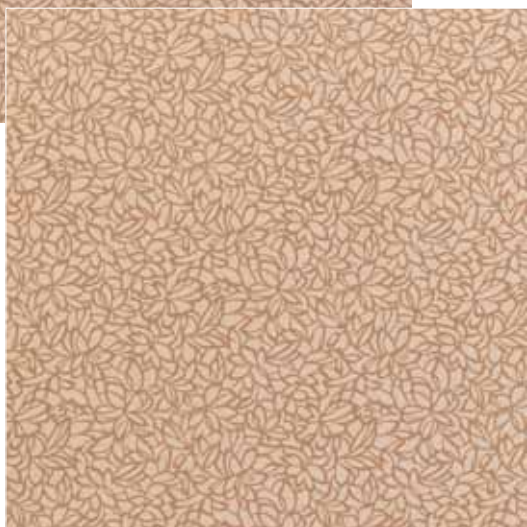


B



507 Flamed Paisley (NLT)\*

1



501 Floweret

1



502 Floreale

2



506 Classic Paisley (NLT)\*



508 Auburn Paisley (NLT)\*

# COSMO MOTIFS

Motifs

Exclusively available with Greenlam

# PAISLEY

Motifs

Exclusively available with Greenlam  
\*Post-forming available in Suede finish only





# WOODS

The wild side of nature, raw, real and rustic, is conveyed by an array of styles borrowed from oaks, teaks, cedars, eucalyptus, olive woods, maples and cherry trees, walnuts and many more. In vertical, and horizontal and random, instinctive patterns.

## WOODS TEXTURED

- |              |                  |
|--------------|------------------|
| Glossy Woods | Super Gloss      |
| Exotic       | Country Wood     |
|              | Chased Wood      |
|              | Handscraped      |
|              | Assorted         |
| Linear       | Raffia           |
|              | Raw Silk         |
|              | Pacific Trail    |
|              | Ruffled Feather  |
|              | Parallel Streaks |
| Open Grain   | Edgy Ash         |
|              | Quarter Cut Oak  |

## WOODS STANDARD

- Elmo
- Oak Lumber
- Prunus
- Soul Timber
- Austro Kenyan Woods
- Venetian Antiques
- Linear Hush
- Horizontal Hush
- Wooden Symphony

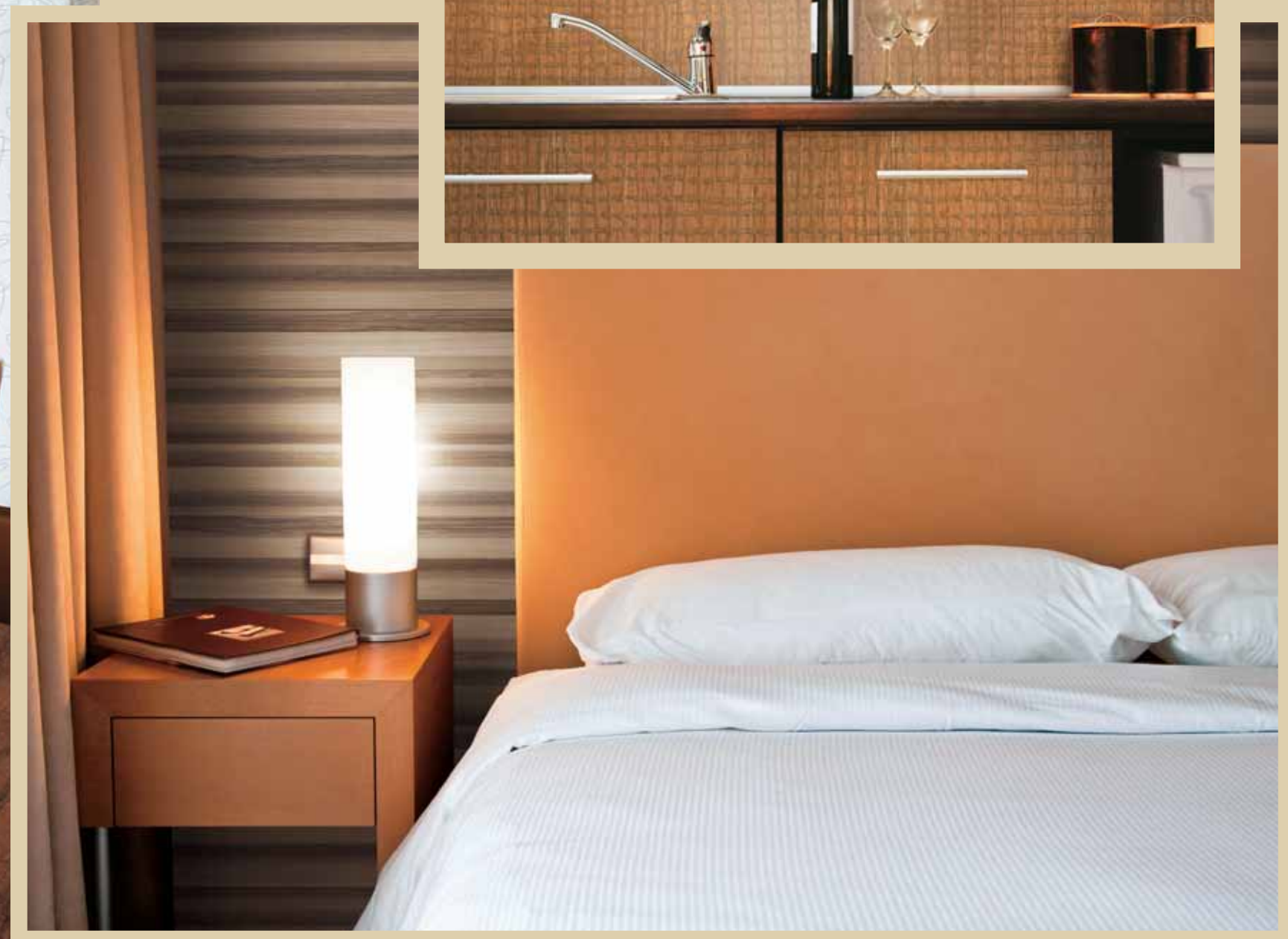




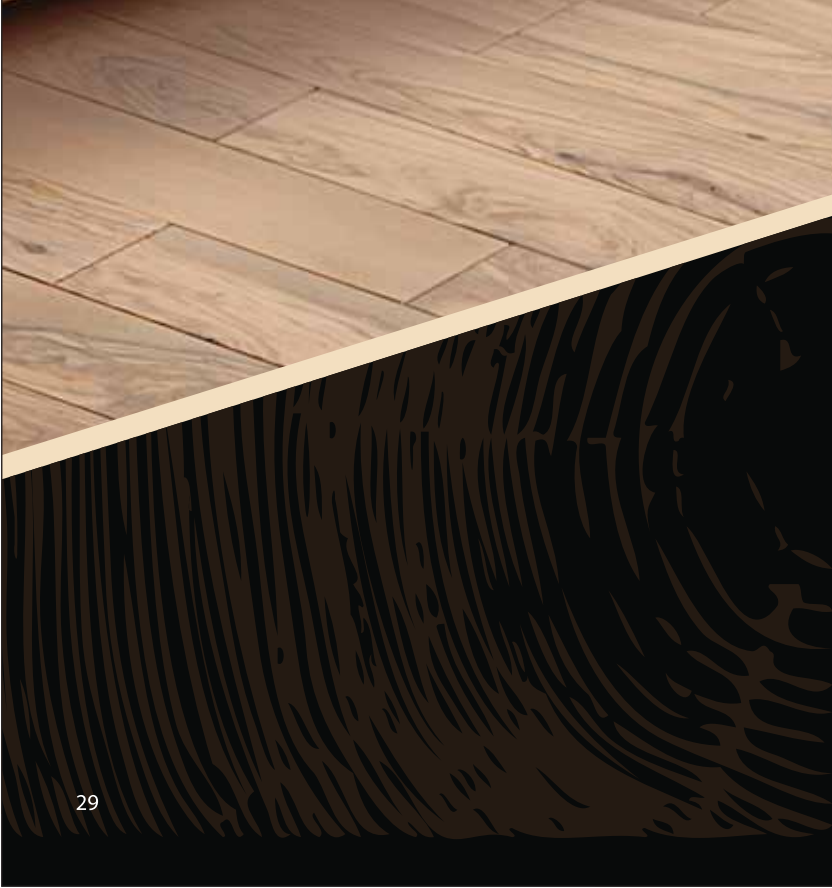












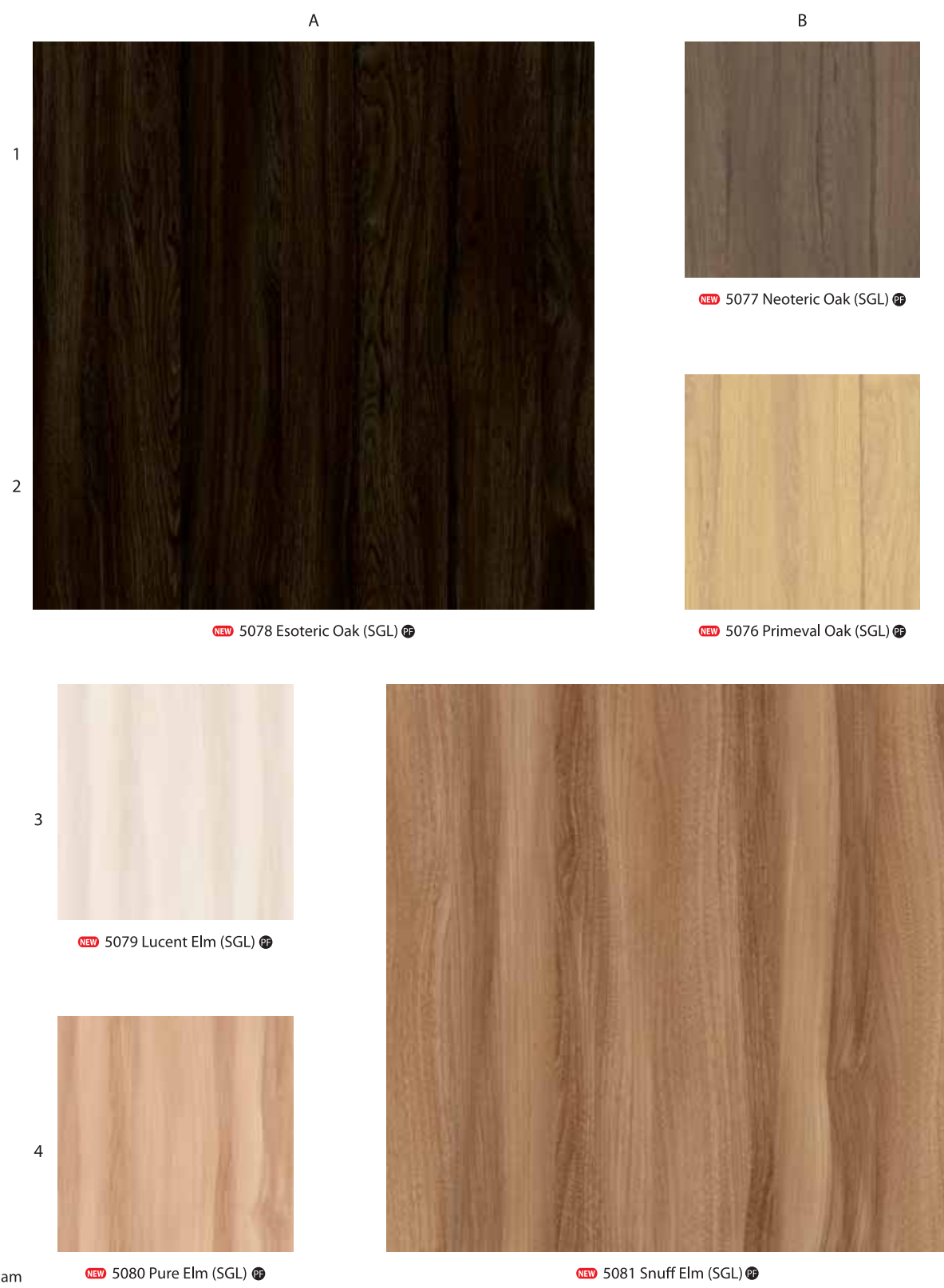
**WOODS  
TEXTURED**



# SUPER GLOSS

Gloss has been and is still in fashion. It's catching up everywhere; wardrobes, kitchens, consoles etc. The new Elms and Oaks add freshness to this trend.

GLOSSY TEXTURE



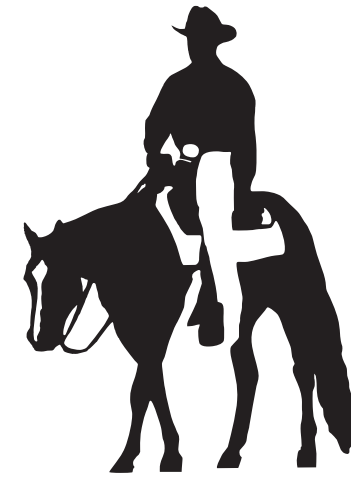
Exclusively available with Greenlam

Recommended for vertical applications only and is provided with peel coat



New Arrivals  
INCREDIBLE INAUGURALS

# COUNTRY WOOD



Raw and rustic oakwood style, out of Oaks and special Banana woods, pair up with a little gloss and glamour, to bring grunge back to interiors. Along with that true country feel.

A



1

B



NEW 5307 Ruptured Oak (CTR)

A



1

NEW 5313 Banana Wood (CTR)

B



2



NEW 5309 Oak Fissure (CTR)



NEW 5308 Rift Oak (CTR)

2



NEW 5314 Urbane Banana (CTR)

2



NEW 5315 Banana Mist (CTR)

EXOTIC TEXTURE

Exclusively available with Greenlam



# CHASED WOOD

Truly, raw and rare. Chasing the wood reveals unseen patterns. Stirring up classics with the contemporary, each rough-cut texture, of the Split Oak and also the clean quarter-cut Ash, is matchless.

A



1

B



**NEW** 5311 California Ash (CHS)

A



1

**NEW** 5316 Oak Radiance (CHS)

B



2



**NEW** 5310 White Ash (CHS)

2



**NEW** 5317 Agrarian Oak (CHS)

**NEW** 5318 Rustic Oak (CHS)

EXOTIC TEXTURE



# HANDSCRAPED™

WOODS  
TEXTURED



EXOTIC TEXTURE



5302 Pure Eucalyptus (HSC)



5301 Eucalyptus Glow (HSC)



5303 Scorched Eucalyptus (HSC)



5055 Café Prune (HSC)

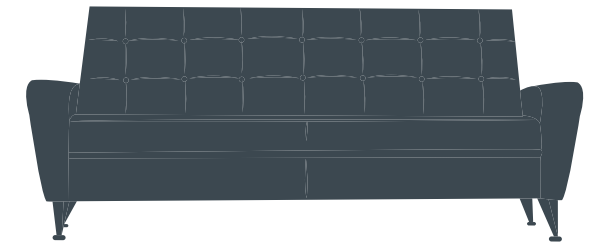


5056 Voguish Prune (HSC)

Exclusively available with Greenlam



# ASSORTED



A



779 Indian Apple (HSC)

B



5024 Alba Oak (HSC)

1

A



5073 Olive Sombre (TST)\*

1

B



5075 Grigio Santos (SSD)

2

EXOTIC TEXTURE

ASSORTED TEXTURE

2



5018 Brooks Walnut (HSC)



743 Golden Antique (HSC)

3



5004 Lorraine Walnut (HSC)



745 Java Antique (HSC)

4



731 Wenge (HSC)

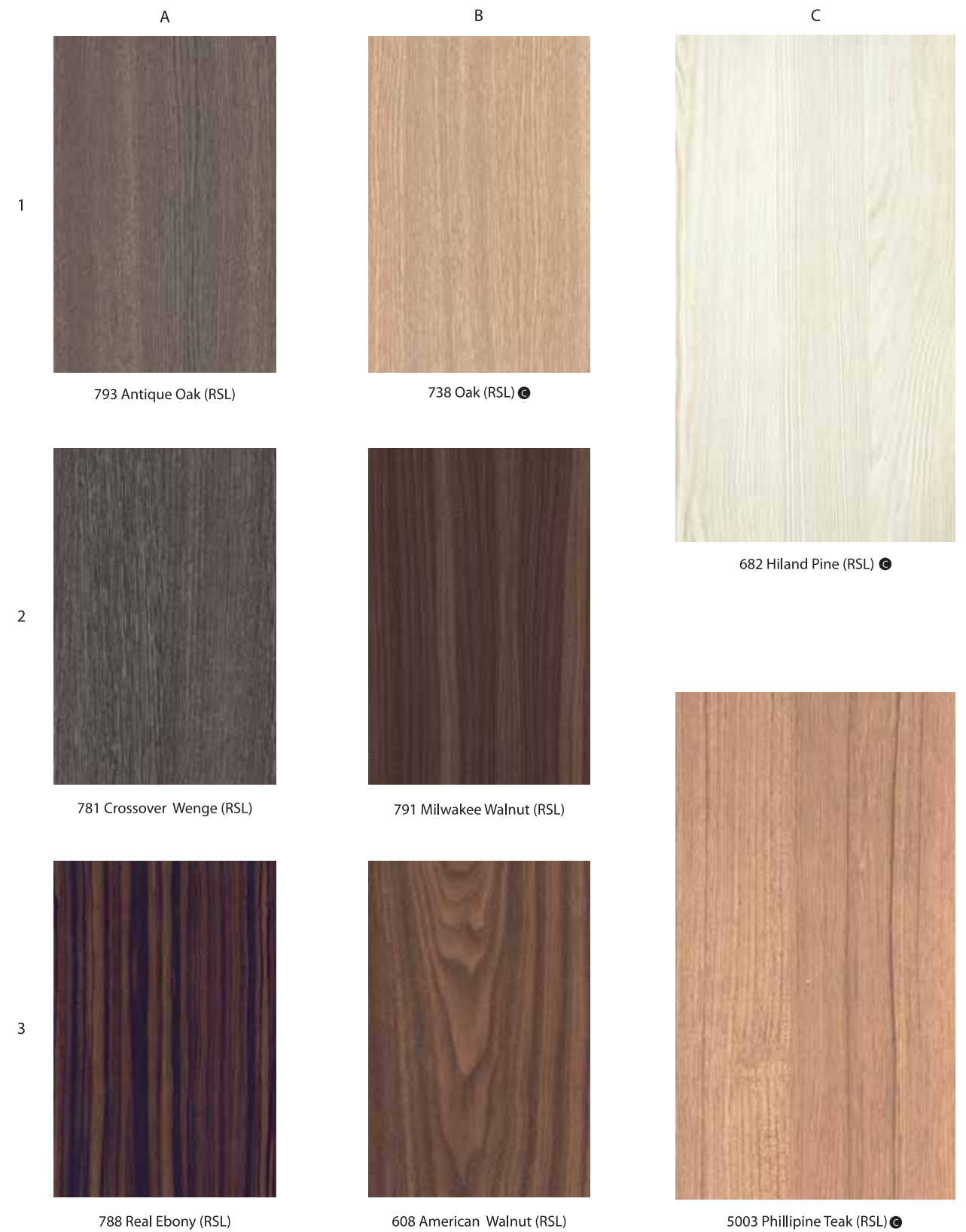


# RAFFIA

# RAW SILK®

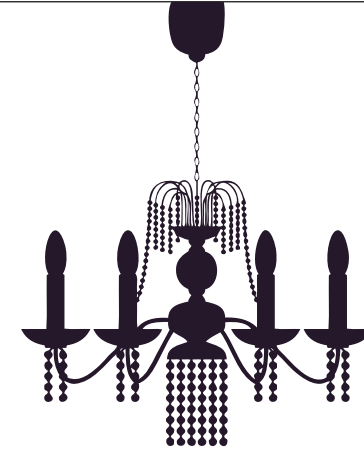
LINEAR TEXTURE

LINEAR TEXTURE

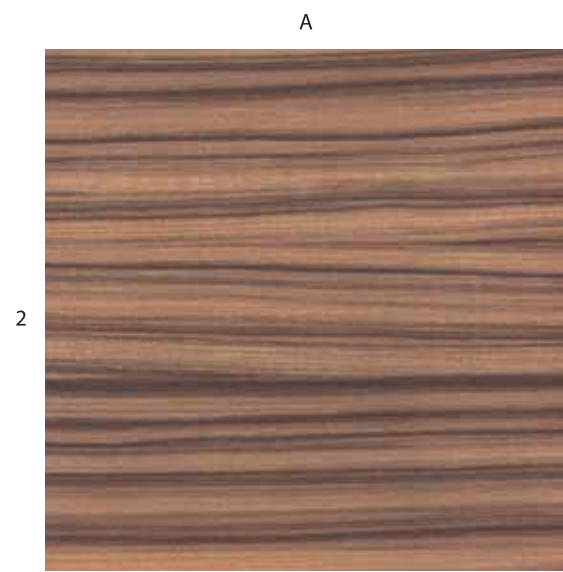




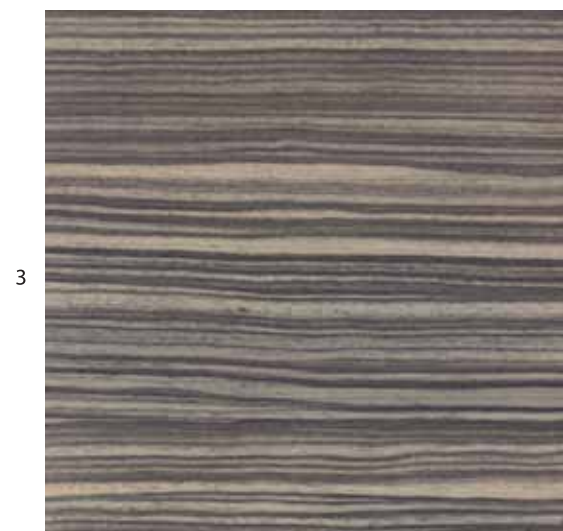
# PACIFIC TRAIL



LINEAR TEXTURE



5523 Horizontal Santos (PTR)



5521 Exotic Ebony (PTR)



5527 White Teak (PTR)



5524 Samara Oak (PTR)



5526 Ironside Oak (PTR)



5071 Ridged Timber (PTR)



5070 Tousled Wood (PTR)



5072 Mountain Log (PTR)

Exclusively available with Greenlam



# RUFFLED FEATHER

LINEAR TEXTURE



5304 Clear Splendor (RFT) ④



5305 Buff Brilliance (RFT) ④



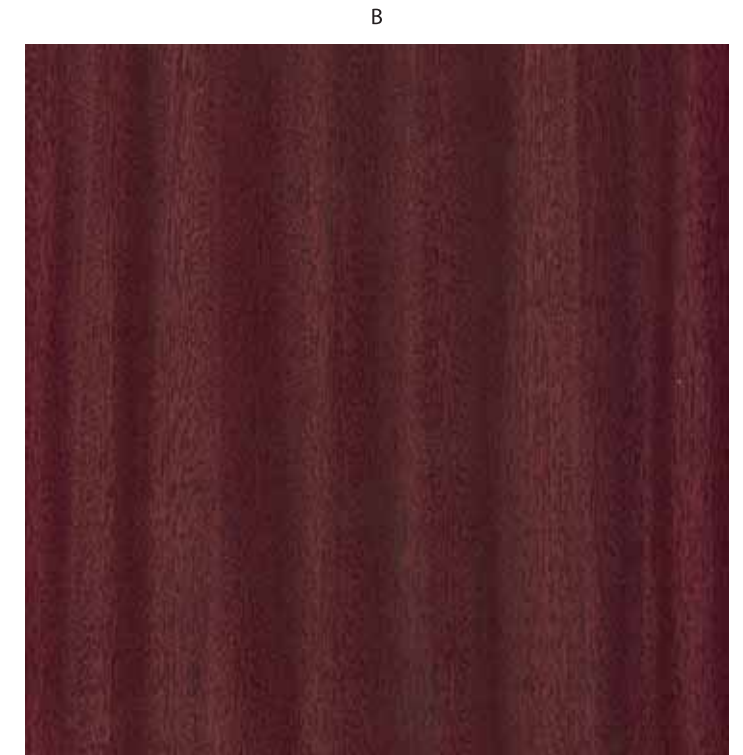
5306 Hazel Luster (RFT) ④



5032 Grey Cobble (RFT) ④



5035 Grey Coco (RFT) ④



749 Sapele (RFT) ④



731 Wenge (RFT)



# PARALLEL STREAKS

# EDGY ASH®

LINEAR TEXTURE

OPEN GRAIN TEXTURE



711 Siam Teak (PST)

738 Oak (PST)



5003 Phillipine Teak (PST)

5016 True Wenge (PST)



696 Latin Walnut (ASH)

780 Kashmir Apple (ASH)



702 Cherry (ASH)

5004 Lorraine Walnut (ASH)



731 Wenge (ASH)



5007 White Larch (ASH)



738 Oak (ASH)



5009 Larch Wood (ASH)



# QUARTER CUT OAK™

OPEN GRAIN TEXTURE

A



5016 True Wenge (QOK) 🌿

B



5018 Brooks Walnut (QOK) 🌿

A



793 Antique Oak (QOK) 🌿

B



5009 Larch Wood (QOK) 🌿

2

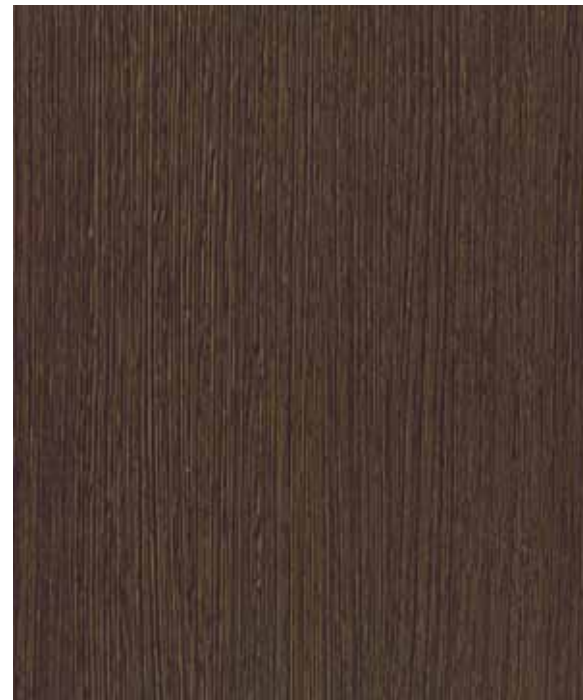


5003 Phillipine Teak (QOK) 🌿

3



738 Oak (QOK) 🌿

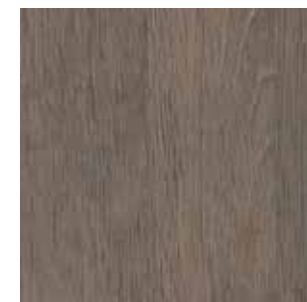


731 Wenge (QOK)

2



792 Slate Oak (QOK) 🌿



5059 Smoked Oak (QOK) 🌿

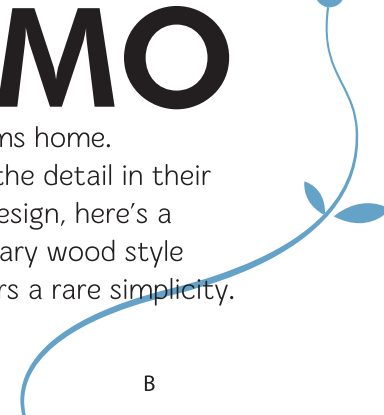




*New Arrivals*  
INCREDIBLE INAUGURALS

# ELMO

Bringing Elms home.  
Capturing the detail in their beautiful design, here's a contemporary wood style which offers a rare simplicity.



A



B



NEW 5079 Lucent Elm

1

2



NEW 5080 Pure Elm



NEW 5081 Snuff Elm

*New Arrivals*  
INCREDIBLE INAUGURALS

# OAK LUMBER

A classic favourite, Oak Lumber is being reintroduced in our new collection on popular demand. It flaunts all natural characteristics of oakwood like knots, flashes and other LIVE features, yet it is not too bold. Looks particularly great in longer lengths and continuous panels.

WOODS  
STANDARD



A



NEW 5077 Neoteric Oak

B



1

2



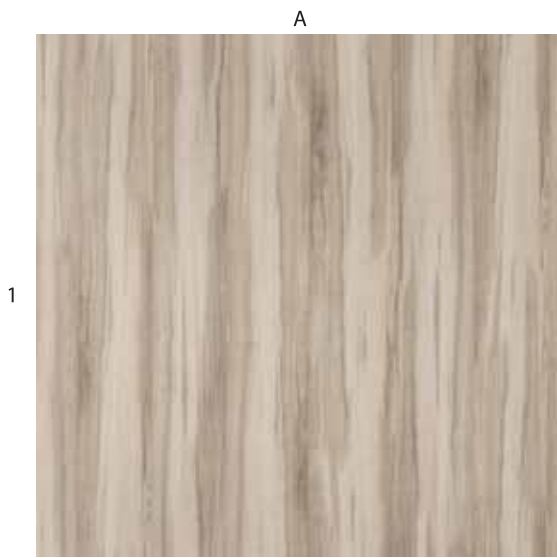
NEW 5076 Primeval Oak



NEW 5078 Esoteric Oak



# PRUNUS



5053 Fresh Prune 




5055 Café Prune 



5054 Ornate Prune 



5056 Voguish Prune 

Exclusively available with Greenlam

# SOUL TIMBER



5023 Amber Flambe 



5022 Chestnut Flambe 

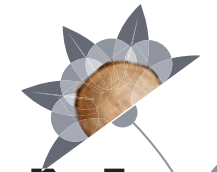


Exclusively available with Greenlam





# VENETIAN ANTIQUES



A



786 Comet Plank

# AUSTRO KENYAN WOODS



B



787 Castle Plank

A



741 Antique

B



743 Golden Antique

1

2



744 White Antique



745 Java Antique



# LINEAR HUSH



A



1

5524 Samara Oak

B



NEW 5082 Louisiana Oak

2



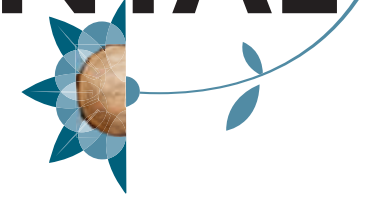
5526 Ironside Oak



NEW 5083 Southern Oak

Available in both horizontal & vertical grain

# HORIZONTAL HUSH



A



1

5528 Sabah Teak

B



5527 White Teak

2



5529 Peninsular Teak



5525 Hickory Oak

3



5523 Horizontal Santos

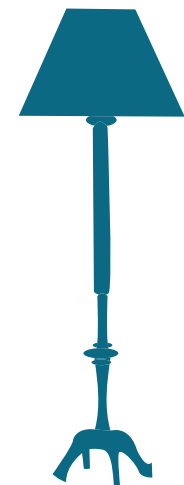


5521 Exotic Ebony

4



5522 Horizontal Ebony







1



5538 Sere Walnut



5539 Naïve Walnut



5540 Smoked Walnut

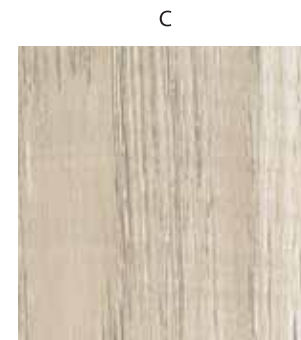


1

5027 Classic Caramel



738 Oak



5024 Alba Oak



791 Milwaukee Walnut



5035 Grey Coco



731 Wenge



5028 Faded Auburn



5025 Ridge Oak



5046 Almond Legend

# WOODEN SYMPHONY

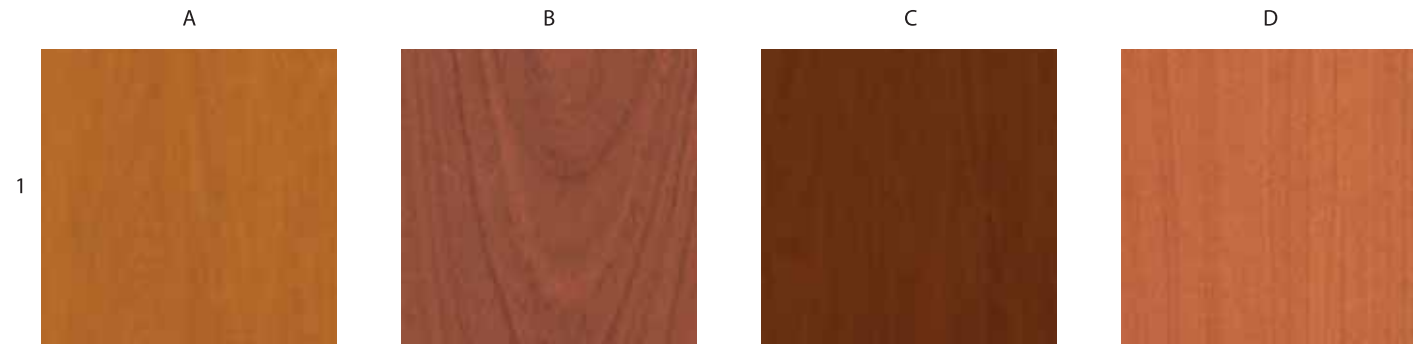


# WOODEN SYMPHONY

# WOODEN SYMPHONY







730 Pear

681 Cherry Seta

733 Corsica Pear

652 Wild Cherry



5043 Scarlet Sycamore

608 American Walnut

5034 Glaced Walnut Bark

5018 Brooks Walnut



610 Halifax Maple

613 Steamed Beech

5041 Pale Sycamore

719 Mangfall Beech



710 Rubber Wood

712 Crystal Maple

631 Natural Pine

684 Crossfire



693 Vancouver Maple

670 Horse Chestnut

605 Mahogany

749 Sapele



5038 Naturelle Olive

788 Real Ebony

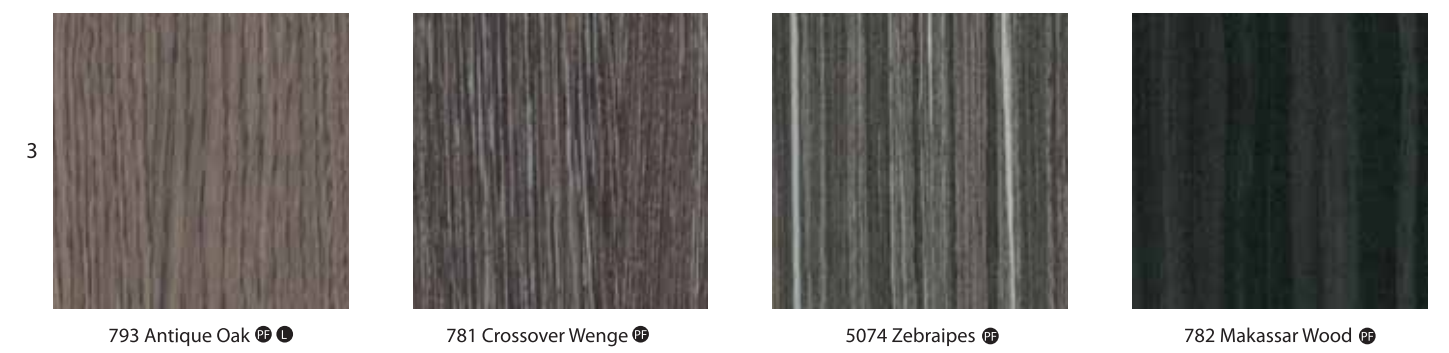
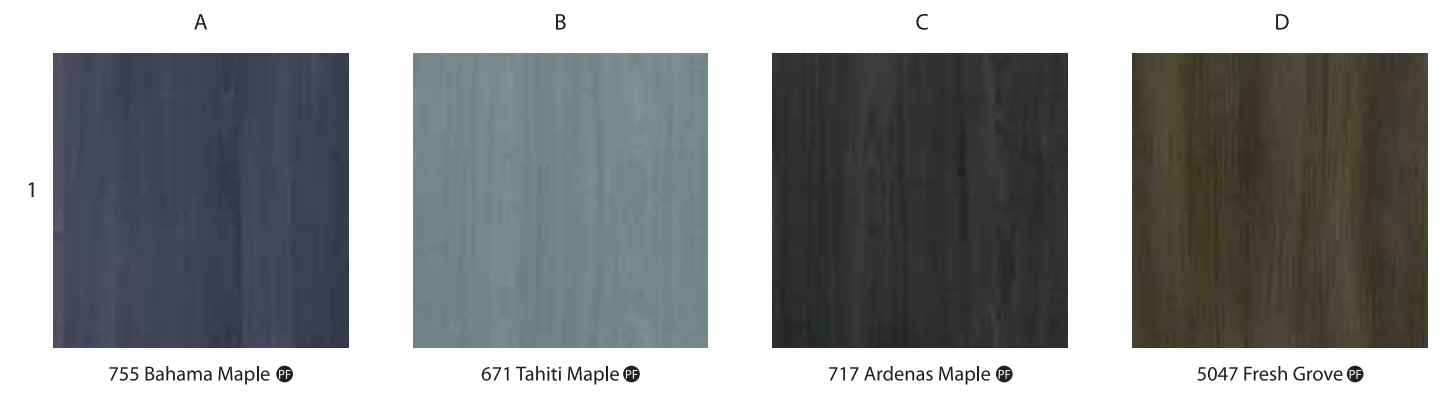
766 Rich Walnut

5050 Umber Oak



# WOODEN SYMPHONY

# WOODEN SYMPHONY





# WOODEN SYMPHONY



# WOODEN SYMPHONY





# SOLIDS

COLOURS. PURE AND SIMPLE.

NO MIXES, NO BLENDS, NO GRADIENTS.

JUST DIFFERENT FINISHES, INCLUDING  
SUEDE, GLOSS, MATTE AND TEXTURES.

BUT WE DIFFER FROM ALL REGULARS BY THE  
COLOUR DELIVERY WITH ABSOLUTE  
PRECISION. RESULT IS SIMPLY UNPARALLELED.

## SOLIDS TEXTURED

Linear

Raffia  
Pacific Trail  
Parallel Streaks  
Ruffled Feather  
Raw Silk  
Onda

Abstract

Retro  
Summer Blooms  
Blazing Delight  
Edgy Ash

Leather

Alluring Alligator  
Nappa Leather

Glossy

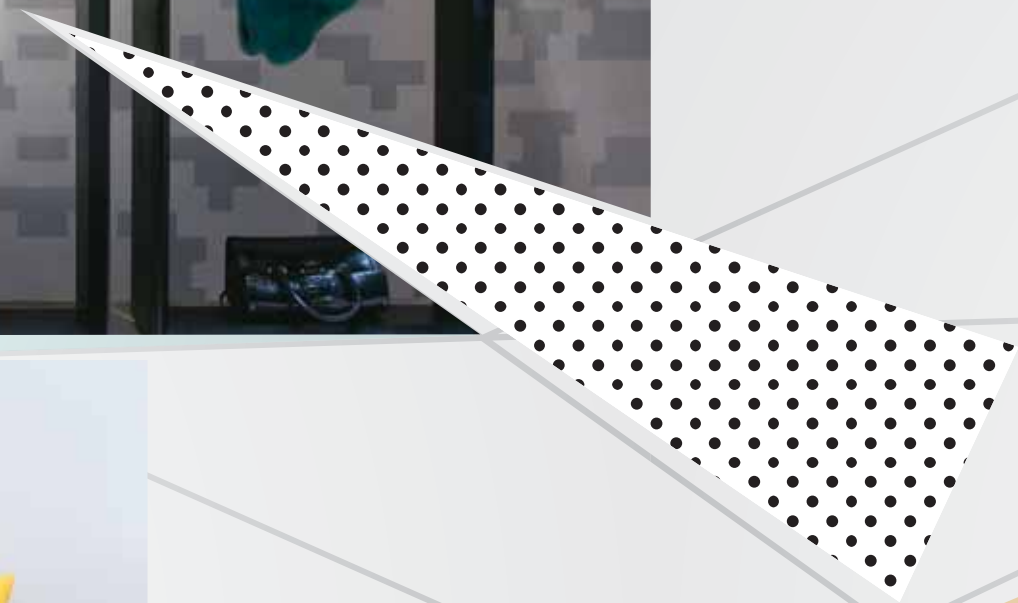
Super Gloss  
Techno Steel

## SOLIDS STANDARD

Popular Colors  
Solids Symphony













# Raffia

# Parallel Streaks

LINEAR TEXTURE

A



108 Absolute White (RFF)

B



204 Red Dynasty (RFF)

1

2



181 Chocolate (RFF)



401 Black (RFF)

Exclusively available with Greenlam

C

A



107 Wool (PST)

B



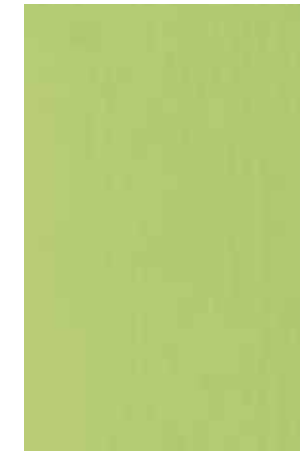
165 Light Red (PST)

1

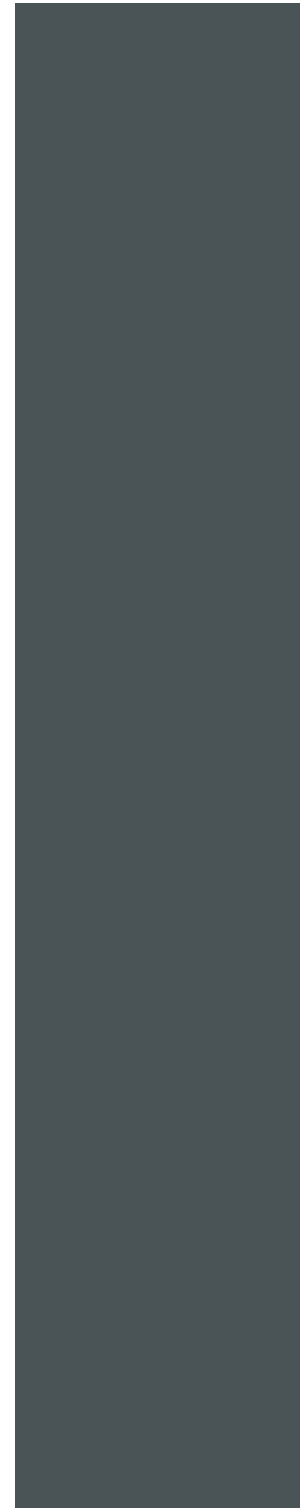
2



270 Silver Grey (PST)



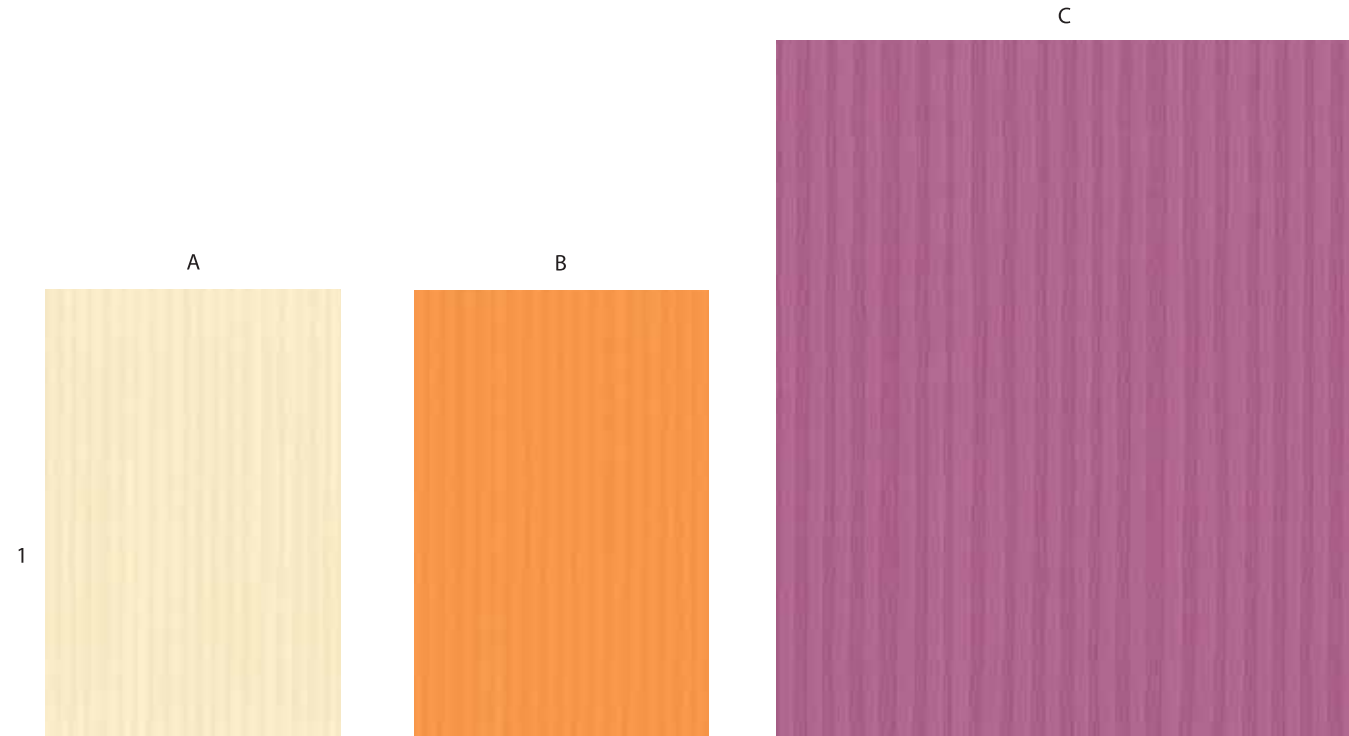
257 Olive (PST)



**NEW** 261 Dark Grey (PST)



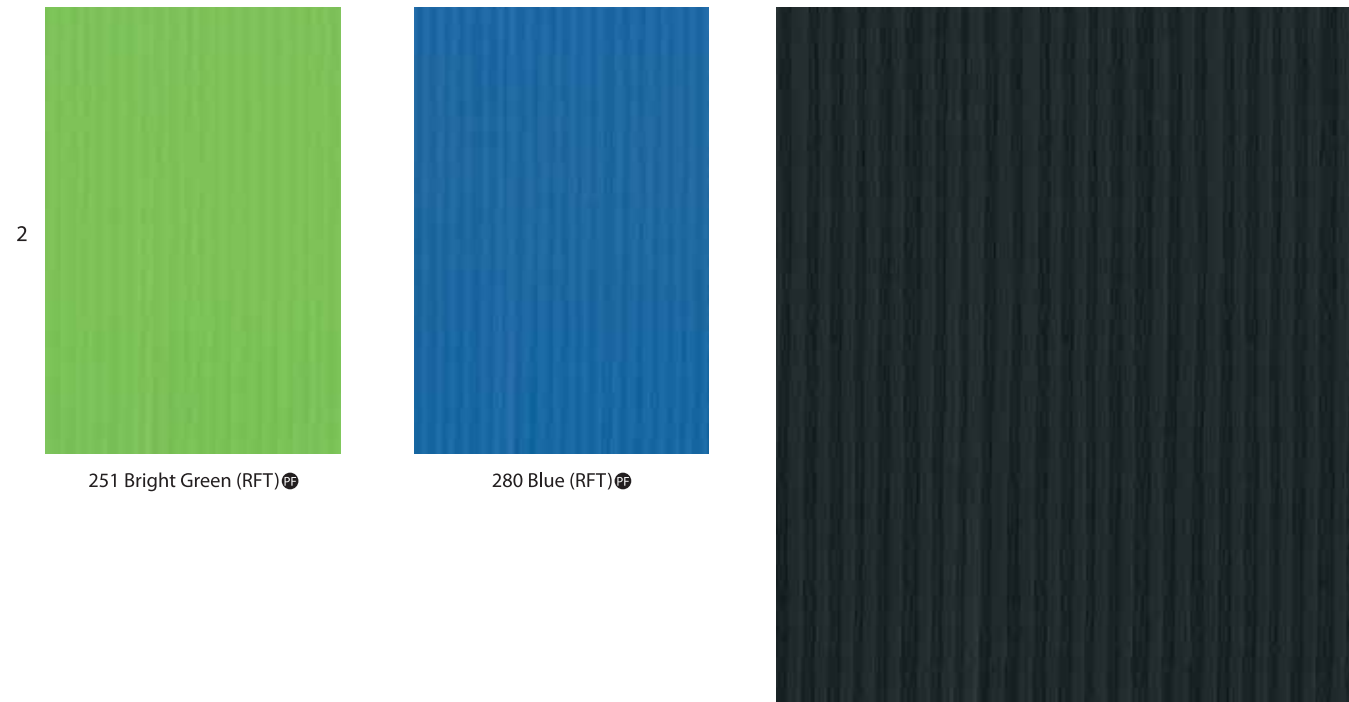
# Ruffled Feather



121 Ivory (RFT) ④

217 Light Orange (RFT) ④

161 Hot Pink (RFT) ④



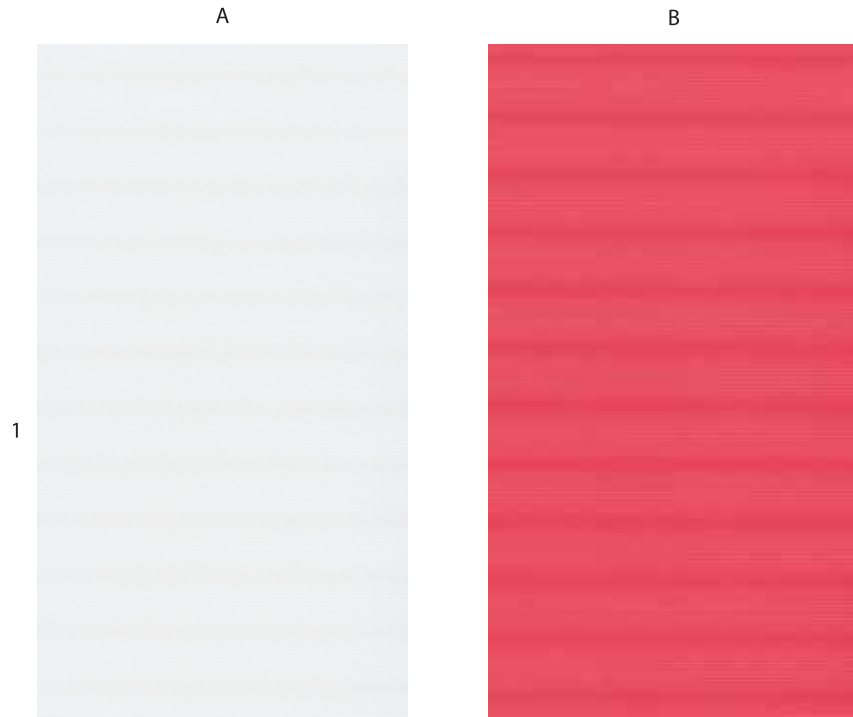
251 Bright Green (RFT) ④

280 Blue (RFT) ④

401 Black (RFT) ④

LINEAR TEXTURE

# Onda<sup>®</sup> Horizontal & Vertical



101 White (ODH)

220 Peach Pink (ODH)



401 Black (OND)

257 Olive (OND)



230 Cream Yellow (OND)

107 Wool (OND)

Onda Horizontal

Onda Vertical

SOLIDS  
TEXTURED

# Raw Silk

A

B



107 Wool (RSL)

401 Black (RSL) ●

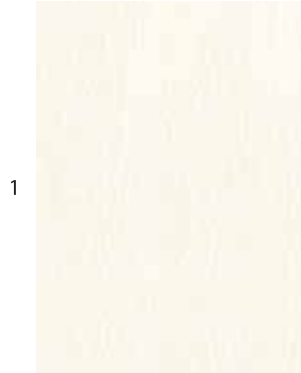
SOLIDS  
TEXTURED

# Blazing Delight

A

B

C



107 Wool (BLD)

152 Almond (BLD)

284 Ozone (BLD)

1

2



145 Doeskin (BLD)

NEW 207 Divine Yellow (BLD)

251 Bright Green (BLD)

3



204 Red Dynasty (BLD)

NEW 181 Chocolate (BLD)

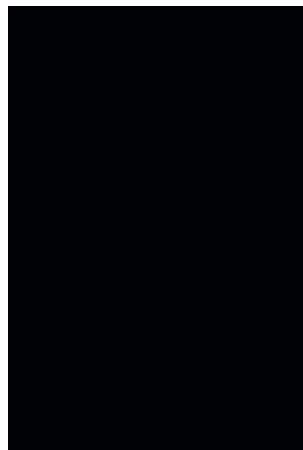
401 Black (BLD)

# Pacific Trail

A

B

C



107 Wool (PTR) ●

148 Tidal Sand (PTR) ●

NEW 401 Black (PTR) ●

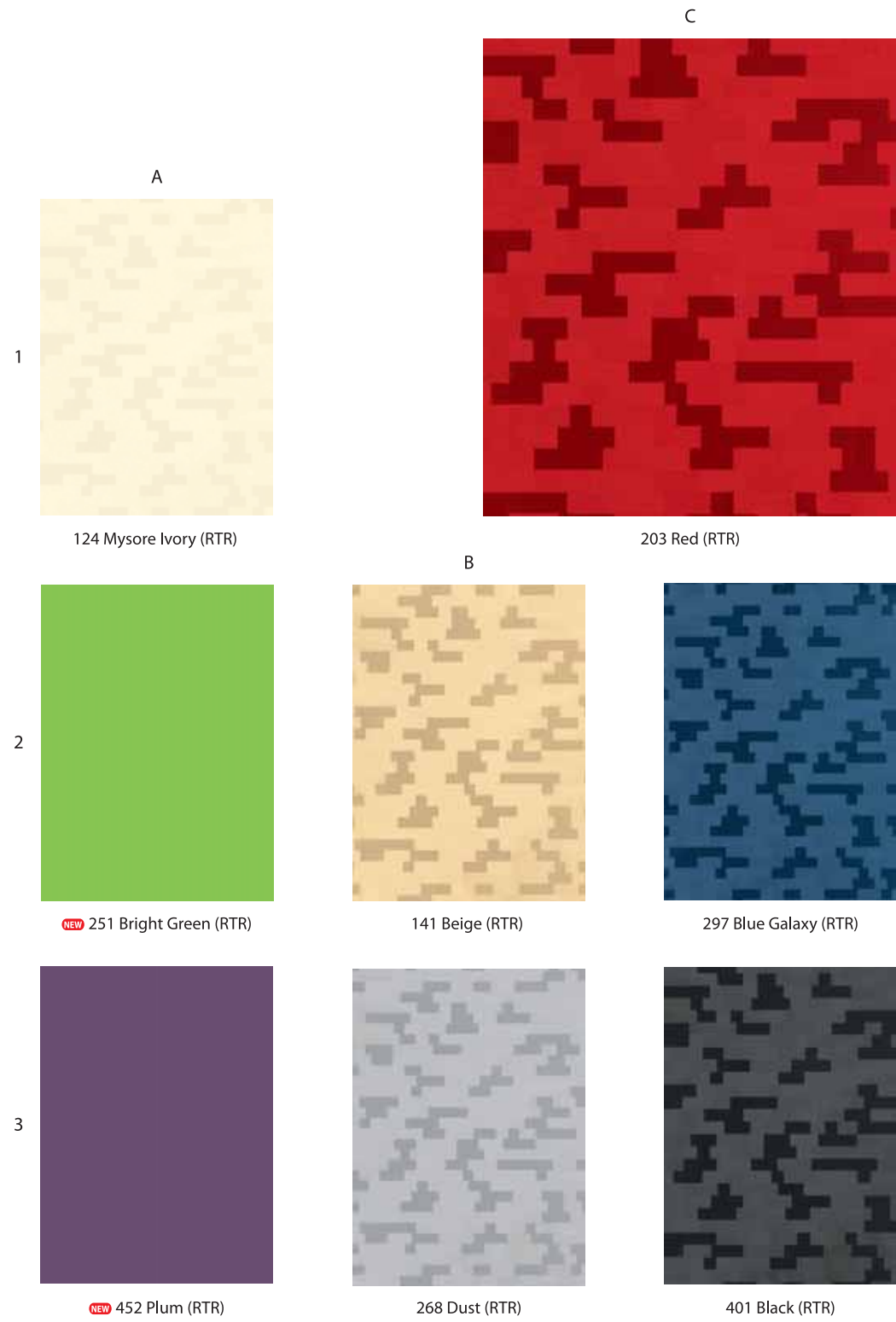
2

LINER TEXTURE

ABSTRACT TEXTURE

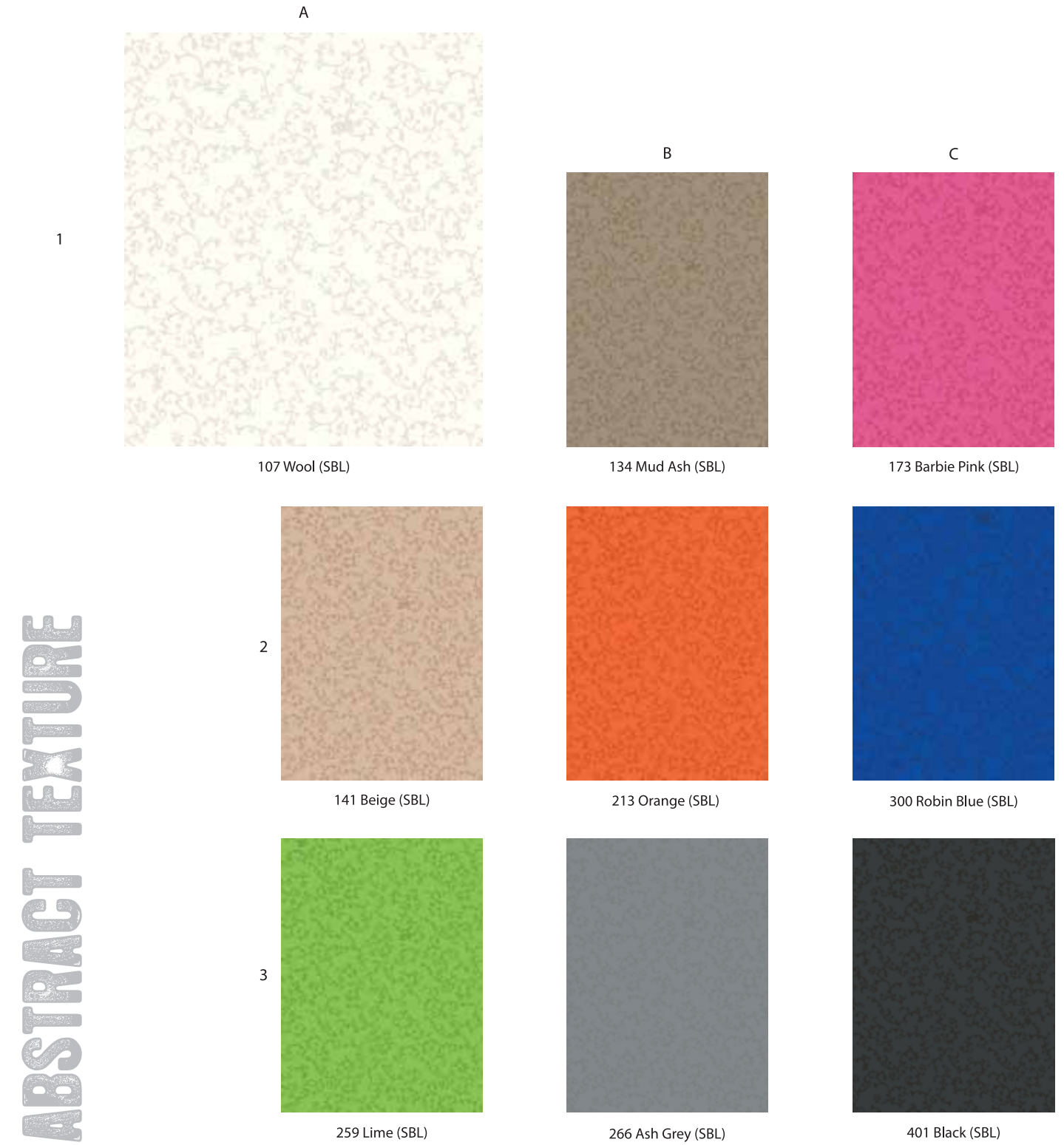


# Retro



Exclusively available with Greenlam

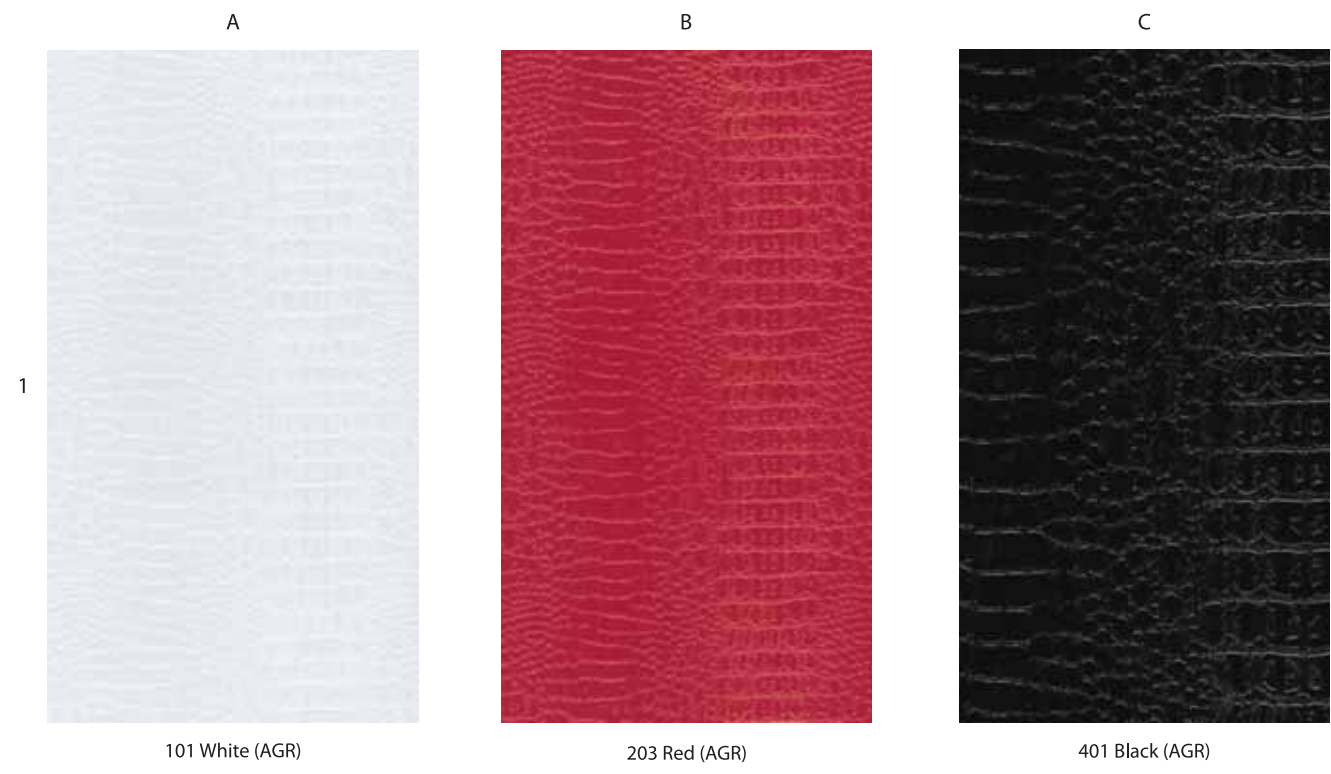
# Summer Blooms



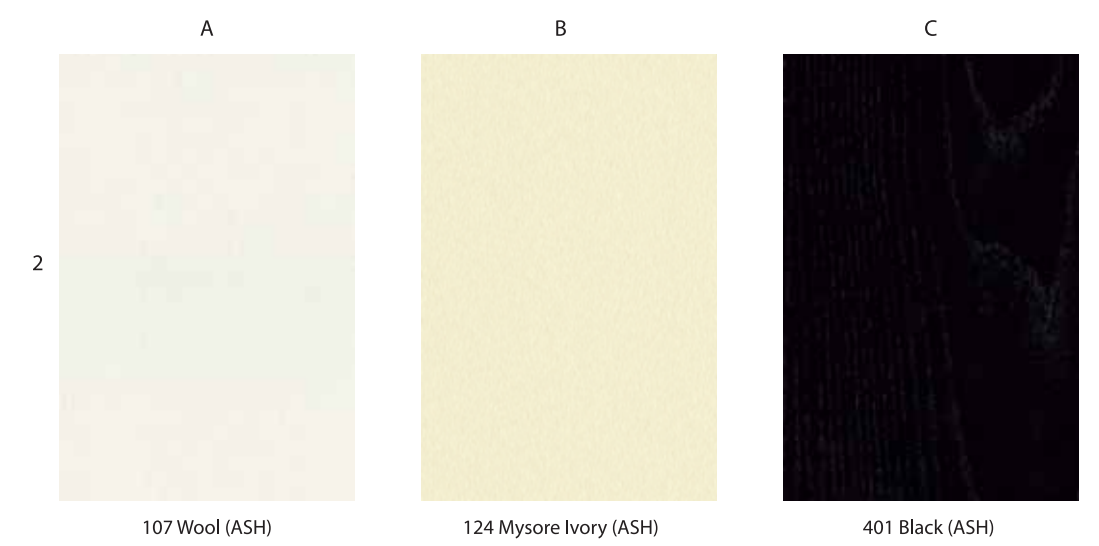
ABSTRACT TEXTURE

Exclusively available with Greenlam  
Recommended for vertical applications and provided with peel coat

# Alluring Alligator®



# Edgy Ash



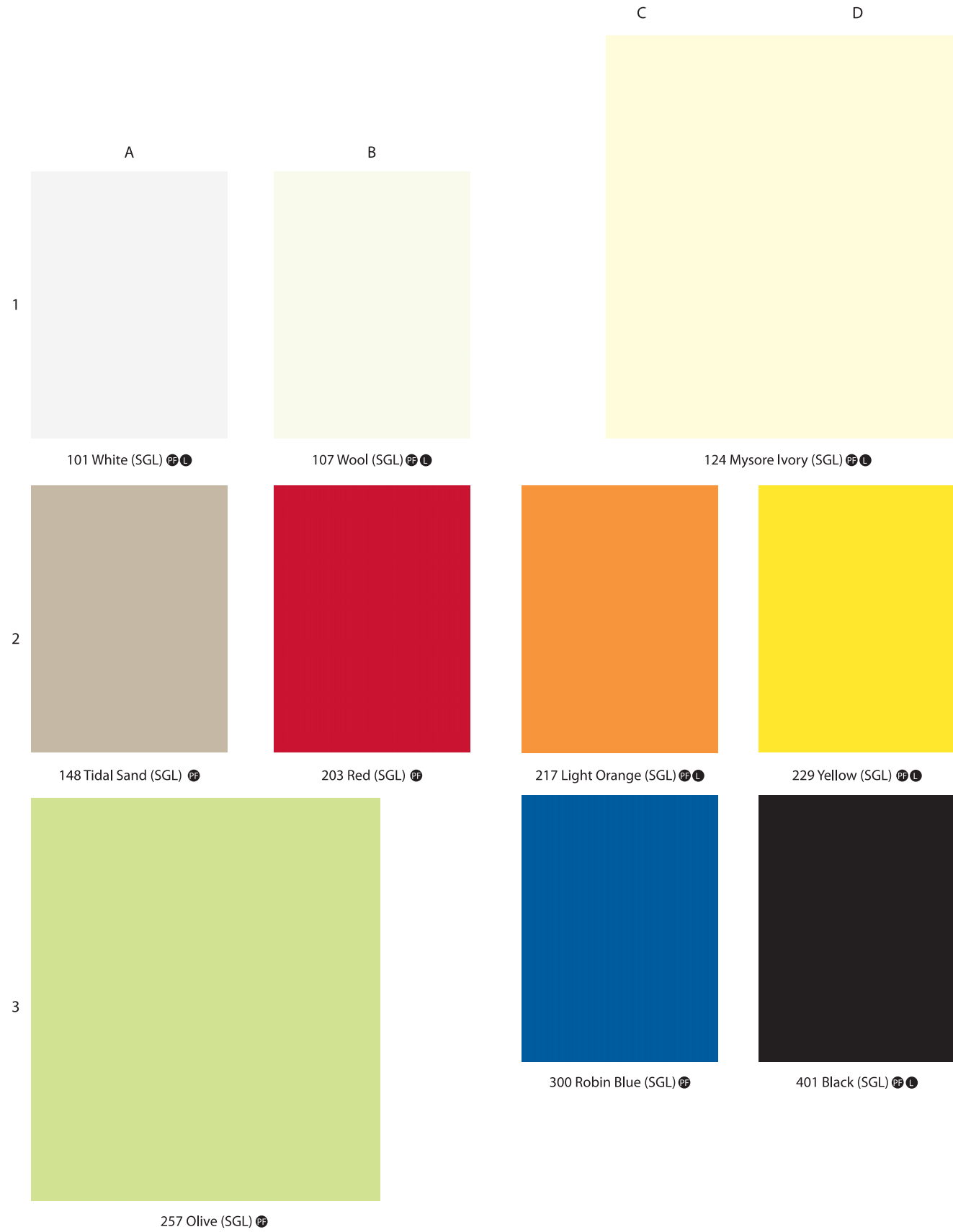
# Nappa Leather



LEATHER



# Super Gloss



GLOSSY TEXTURE

Recommended for vertical applications and provided with peel coat

# Techno Steel<sup>®</sup>



Resistant to 1000+ abrasion cycles & provided with peel coat

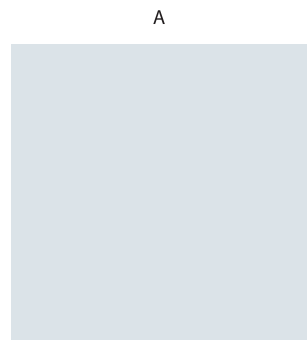
# POPULAR COLORS



# SOLIDS SYMPHONY







103 Snow White



267 Bluish Grey



263 Thistle



275 Pearl Grey



262 Grey



272 Cloud



294 Storm



273 Sky Grey



296 Fog



265 Grey Sand



268 Dust



266 Ash Grey



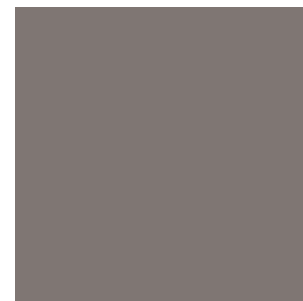
282 Light Blue



284 Ozone



297 Blue Galaxy



276 Pebble



269 Smog



277 Charcoal

# SOLIDS SYMPHONY



	A	B	C	
1				
	243 Sea Green	245 Dark Green	248 Leaf Green	
			D	
2				
	259 Lime	241 Kiwi Green	251 Bright Green	250 Grass Green
3				
	246 Pista		257 Olive	247 Dutch Green

		B		C	D
1					
		281 Navy Blue		300 Robin Blue	280 Blue
	A				
2					
	260 Aqua Green	463 Pacific	283 Sky Blue	291 Electric Blue	
3					
	286 Lagoon	295 Azur	292 Celestial Blue		





# SOLIDS SYMPHONY

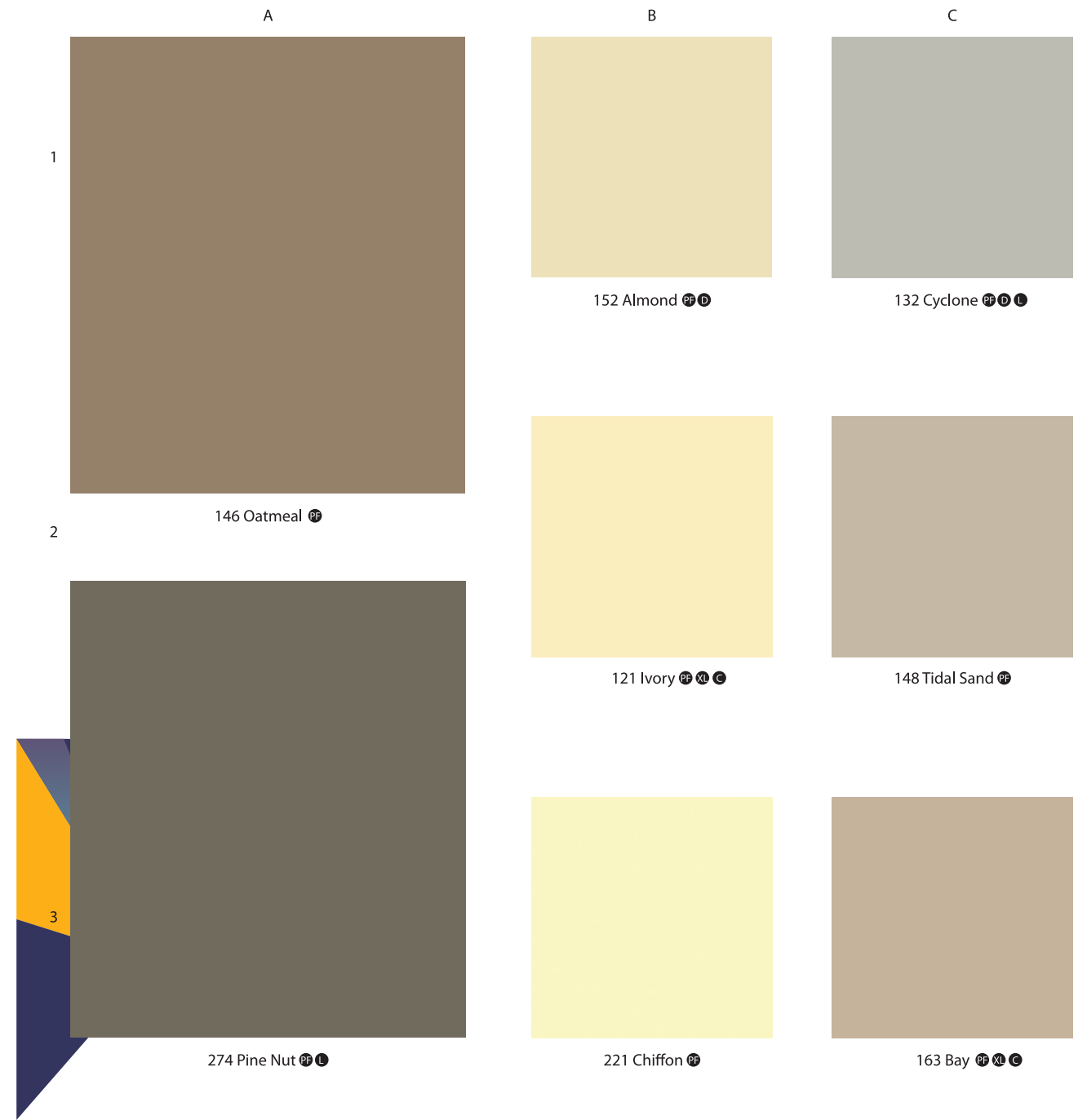
# SOLIDS SYMPHONY

	A	B	C
1			
	171 Almond Pink	204 Red Dynasty	168 Pink
2			
	169 Rose Pink	203 Red	166 Blush Pink
3			
	165 Light Red	201 Maroon	166 Blush Pink

	A	B	C
1			
	790 Lemon	217 Light Orange	230 Cream Yellow
2			
	208 Mango	205 Brick	229 Yellow
3			
	208 Mango	213 Orange	207 Divine Yellow

# SOLIDS SYMPHONY

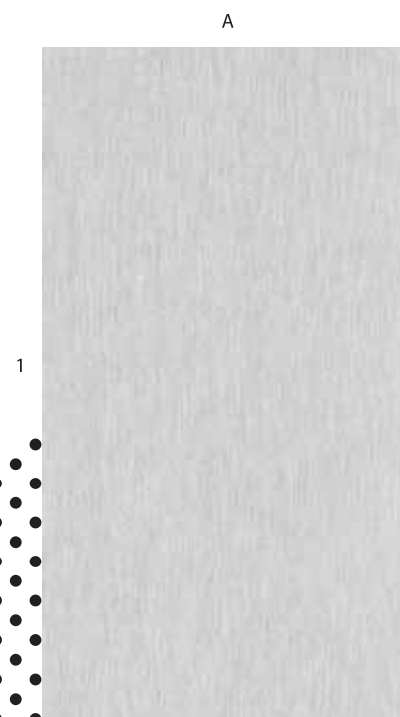
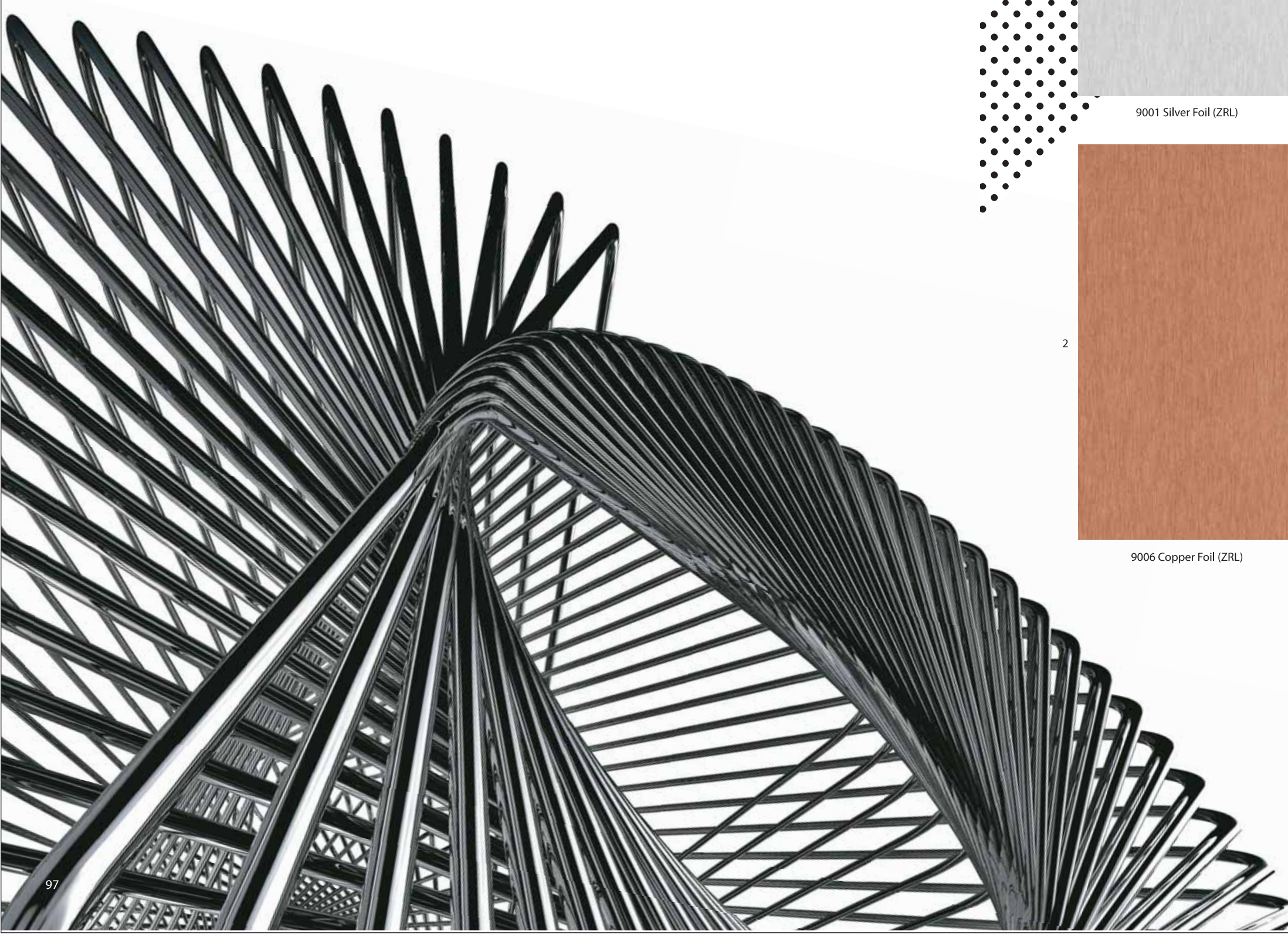
# SOLIDS SYMPHONY





# METALLIC MARVELS

GLEAMING METAL FINISHES THAT CAN CHANGE THE MOOD OF ANY DÉCOR, ADDING A TOUCH OF HIGH-END GLAMOUR. IN A RANGE OF METALLIC COLOURS FROM GOLD TO COPPER, SILVER TO STEEL AND MORE.



9001 Silver Foil (ZRL)



9009 Steel Foil (ZRL)



9003 Bronze Foil (ZRL)



9006 Copper Foil (ZRL)



9002 Gold Foil (ZRL)



Recommended for vertical applications and provided with Low handling requirement



# INDEX



D.No.	Name	Page	Row	Col	PF	D	L	XL	C
<b>ABSTRACTS</b>									
<b>Mesh</b>									
NEW 5566	Clear Mesh*	7	1	A	PF	D	-	-	-
NEW 5567	Grey Mesh*	7	1	B	PF	D	-	-	-
NEW 5568	Smoky Mesh*	7	2	A	PF	D	-	-	-
NEW 5569	Earthen Mesh*	7	2	B	PF	D	-	-	-
NEW 5570	Bronze Mesh*	7	2	C	PF	D	-	-	-
<b>Marmoreal</b>									
NEW 5571	Crème Marquina (STN)*	8	1	A	PF	-	-	-	-
NEW 5572	Grey Marquina (STN)*	8	1	B	PF	-	-	-	-
NEW 5573	Tanned Marquina (STN)*	8	1	C	PF	-	-	-	-
<b>Fabric</b>									
5551	Thai Almond Silk	9	2	A	-	-	-	-	-
5551	Thai Almond Silk (WWR)	9	3	A	-	-	-	-	-
5555	Thai Tan Silk	9	1	A	-	-	-	-	-
5555	Thai Tan Silk (WWR)	9	1	B	-	-	-	-	-
<b>Elegant Tweeds</b>									
503	Mod Twine (TXM)	10	1	A	-	-	-	-	-
503	Mod Twine	10	2	C	PF	-	-	-	-
504	Earthy Elite (TXM)	10	1	B	-	-	-	-	-
504	Earthy Elite	10	1	C	PF	-	-	-	-
505	Livid Ecstasy (TXM)	10	2	A	-	-	-	-	-
505	Livid Ecstasy	10	3	C	PF	-	-	-	-
<b>Caravan Leather</b>									
5561	Candy Orange (CRL)	11	1	A	-	-	-	-	-
5562	Scarlet (CRL)	11	1	B	-	-	-	-	-
5563	Dusk (CRL)	11	2	B	-	-	-	-	-
<b>Moonstruck Pearl</b>									
901	Calcino	12	1	A	-	-	-	-	-
921	Graphite	12	1	C	-	-	-	-	-
923	Meta Silver	12	2	B	-	-	L	XL	C
924	Meta Copper	12	2	D	-	-	-	-	-
928	Metaline	12	3	A	-	-	-	-	-
929	Metaline Grey	12	3	C	-	-	L	XL	C
946	Shell	12	4	B	-	-	-	-	-
948	Black Sea Pearl	12	4	D	-	-	L	-	-
<b>Coffee Sack</b>									
556	Café Noir (TXM)	13	1	A	-	-	-	-	-
557	Café au Lait (TXM)	13	1	B	-	-	-	-	-
<b>Rustics</b>									
553	Silver Rubble (STN)	14	1	A	-	-	-	-	-
554	Sear Reef (STN)	14	1	B	-	-	-	-	-
555	Bronze Gravel (STN)	14	1	C	-	-	-	-	-
5854	Copper Taint (STN)	14	2	A	PF	-	-	-	-
5856	Steel Oxid (STN)	14	2	B	PF	-	-	-	-
<b>Lateral Spirits</b>									
5556	Chrome Gush (PTR)	15	1	A	PF	-	-	-	-
5557	Rouge Route (PTR)	15	2	A	PF	-	-	-	-
5558	Royal Aisle (PTR)	15	1	B	PF	-	-	-	-
5559	Tawny Trail (PTR)	15	2	B	PF	-	-	-	-
<b>Bamboo</b>									
5531	Auburn Bamboo	16	1	A	PF	-	-	-	-
5532	Fresh Bamboo	16	1	B	PF	-	-	-	-
<b>Florence</b>									
551	Vivid Flora (TST)	17	1	A	-	-	-	-	-
552	Café Flora (TST)	17	1	B	-	-	-	-	-
<b>Cosmo Motifs</b>									
501	Floweret	19	1	A	PF	-	-	-	-
502	Floreal	19	1	B	PF	-	-	-	-
<b>Paisley</b>									
506	Classic Paisley (NLT)	20	2	A	PF	-	-	-	-
507	Flamed Paisley (NLT)	20	2	B	PF	-	-	-	-
508	Auburn Paisley (NLT)	20	2	B	PF	-	-	-	-
<b>WOODS TEXTURED</b>									
<b>Super Gloss</b>									
5043	Scarlet Sycamore (SGL)	32	1	A	PF	-	-	-	-
NEW 5076	Primeval Oak (SGL)*	31	2	B	PF	-	-	-	-
NEW 5077	Neoteric Oak (SGL)*	31	1	B	PF	-	-	-	-
NEW 5078	Esoteric Oak (SGL)*	31	1	A	PF	-	-	-	-
NEW 5079	Lucent Elm (SGL)*	31	3	A	PF	-	-	-	-
NEW 5080	Pure Elm (SGL)*	31	4	A	PF	-	-	-	-
NEW 5081	Snuff Elm (SGL)*	31	4	B	PF	-	-	-	-
5515	Brown Raft Wood (SGL)	32	1	B	PF	-	-	-	-
5516	Grey Raft Wood (SGL)	32	1	C	PF	-	-	-	-
<b>Country Wood</b>									
NEW 5307	Ruptured Oak (CTR)*	33	1	B	PF	-	-	-	-
NEW 5308	Rift Oak (CTR)*	33	2	B	PF	-	-	-	-
NEW 5309	Oak Fissure (CTR)*	33	2	A	PF	-	-	-	-
NEW 5313	Banana Wood (CTR)*	34	1	A	PF	-	-	-	-
NEW 5314	Urbane Banana (CTR)*	34	2	A	PF	-	-	-	-
NEW 5315	Banana Mist (CTR)*	34	2	B	PF	-	-	-	-
<b>Chased Wood</b>									
NEW 5310	White Ash (CHS)*	35	2	A	-	-	-	-	-
NEW 5311	California Ash (CHS)*	35	1	B	-	-	-	-	-
NEW 5312	Cured Ash (CHS)*	35	2	B	-	-	-	-	-
NEW 5316	Oak Radiance (CHS)*	36	1	A	-	-	-	-	-
NEW 5317	Agrarian Oak (CHS)*	36	2	A	-	-	-	-	-
NEW 5318	Rustic Oak (CHS)*	36	2	B	-	-	-	-	-

D.No.	Name	Page	Row	Col	PF	D	L	XL	C
<b>Handscraped</b>									
731	Wenge (HSC)	39	4	B	-	-	-	-	-
743	Golden Antique (HSC)	39	2	B	-	-	-	-	-
745	Java Antique (HSC)	39	3	B	-	-	-	-	-
779	Indian Apple (HSC)	39	1	A	-	-	-	-	-
5004	Lorraine Walnut (HSC)	39	3	A	-	-	-	-	-
5018	Brooks Walnut (HSC)	39	2	A	-	-	-	-	-
5024	Alba Oak (HSC)	39	1	B	-	-	-	-	-
5055	Café Prune (HSC)	38	1	A	-	-	-	-	-
5056	Voguish Prune (HSC)	38	1	B	-	-	-	-	-
5301	Eucalyptus Glow (HSC)	37	1	B	-	-	-	-	-
5302	Pure Eucalyptus (HSC)	37	2	A	-	-	-	-	-
5303	Scorched Eucalyptus (HSC) 37	3	B	-	-	-	-	-	-
<b>Assorted</b>									
5073	Olive Sombre (TST)	40	1	A	-	-	-	-	-
5075	Grigio Santos (SSD)	40	2	B	-	-	-	-	-
<b>Raffia</b>									
731	Wenge (RFF)	41	3	A	-	-	-	-	-
766	Rich Walnut (RFF)	41	1	C	-	-	-	-	-
5034	Glaced Walnut Bark (RFF)	41	1	A	-	-	-	-	-
5035	Grey Coco (RFF)	41	1	B	-	-	-	-	-
5059	Smoked Oak (RFF)	41	2	A	-	-	-	-	-
<b>Raw Silk</b>									
608	American Walnut (RSL)	42	3	B	-	-	-	-	-
682	Hiland Pine (RSL)	42	1	C	-	-	-	-	C
738	Oak (RSL)	42	1	B	-	-	-	-	C
781	Crossover Wenge (RSL)	42	2	A	-	-	-	-	-
788	Real Ebony (RSL)	42	3	A	-	-	-	-	-
791	Milwaukee Walnut (RSL)	42	2	B	-	-	-	-	-
793	Antique Oak (RSL)	42	1	A	-	-	-	-	-
5003	Phillipine Teak (RSL)	42	3	C	-	-	-	-	C
<b>Pacific Trail</b>									
5070	Tousled Wood (PTR)	44	1	B	PF	-	-	-	-
5071	Ridged Timber (PTR)	44	1	A	PF	-	-	-	-
5072	Mountain Log (PTR)	44	2	B	PF	-	-	-	-
5521	Exotic Ebony (PTR)	43	3	A	PF	-	-	-	-
5523	Horizontal Santos (PTR)	43	2	A	PF	-	-	-	-
5524	Samara Oak (PTR)	43	2	B	PF	-	-	-	-
5526	Ironsides Oak (PTR)	43	3	B	PF	-	-	-	-
5527	White Teak (PTR)	43	1	B	PF	-	-	-	-
<b>Ruffled Feather</b>									
731	Wenge (RFT)	46	2	B	-	-	-	-	-
749	Sapele (RFT)	46	1	B	PF	-	-	-	-
5032	Grey Cobble (RFT)	46	1	A	PF	-	-	-	-
5035	Grey Coco (RFT)	46	2	A	PF	-	-	-	-
5304	Clear Splendor (RFT)	45	1	A	PF	-	-	-	-
5305	Buff Brilliance (RFT)	45	1	B	PF	-	-	-	-
5306	Hazel Luster (RFT)	45	2	B	PF	-	-	-	-
<b>Parallel Streaks</b>									
711	Siam Teak (PST)	47	1	A	-	-	-	-	-
738	Oak (PST)	47	1	B	-	-	-	-	-
5003	Phillipine Teak (PST)	47	2	B	-	-	-	-	-
5016	True Wenge (PST)	47	2	C	-	-	-	-	-
<b>Eddy Ash</b>									
696	Latin Walnut (ASH)	48	1	A	-	-	-	-	-
702	Cherry (ASH)	48	2	A	-	-	-	-	-
731	Wenge (ASH)	48	3	A	-	-	-	-	-
738	Oak (ASH)	48	4	A	-	-	-	-	-
780	Kashmir Apple (ASH)	48	1	B	-	-	-	-	-
5004	Lorraine Walnut (ASH)	48	2	B	-	-	-	-	-
5007	White Larch (ASH)	48	3	B	-	-	-	-	-
5009	Larch Wood (ASH)	48	4	B	-	-	-	-	-
<b>Quarter Cut Oak</b>									
731	Wenge (QOK)	49	2	B	-	-	-	-	-
738	Oak (QOK)	49	3	A	PF	-	-	-	-
792	Slate Oak (QOK)	50	2	A	PF	-	-	-	-
793	Antique Oak (QOK)	50	1	A	PF	-	-	-	-
5003	Phillipine Teak (QOK)	49	2	A	PF	-	-	-	-
5009	Larch Wood (QOK)	50	1	B	PF	-	-	-	-
5016	True Wenge (QOK)	49	1	A	PF	-	-	-	-
5018	Brooks Walnut (QOK)	49	1	B	PF	-	-	-	-
5059	Smoked Oak (QOK)	50	2	B	PF	-	-	-	-
<b>WOODS STANDARD</b>									
<b>Elmo</b>									
NEW 5079	Lucent Elm*	51	1	B	PF	-	-	-	-
NEW 5080	Pure Elm*	51	2	A	PF	-	-	-	-
NEW 5081	Snuff Elm*	51	2	B	PF	-	-	-	-
<b>Oak Lumber</b>									
NEW 5076	Primeval Oak*	52	2	A	PF	-	-	-	-
NEW 5077	Neoteric Oak*	52	1	A	PF	-	-	-	-
NEW 5078	Esoteric Oak*	52	2	B	PF	-	-	-	-
<b>Prunus</b>									
5053	Fresh Prune	53	1	A	PF	-	-	-	-
5054	Ornate Prune	53	1	B	PF	-	-	-	-
5055	Café Prune	53	2	A	PF	-	-	-	L
5056									



# GREENLAM L RANGE - 4.25' X 10'

Design No. & Name	Page No.	Row	Column
<b>Abstracts</b>			
<b>Moonstruck Pearl</b>			
923 Meta Silver	12	2	B
929 Metaline Grey	12	3	C
948 Black Sea Pearl	12	4	D
<b>WOODS STANDARD</b>			
<b>Prunus</b>			
5055 Café Prune	53	2	A
5056 Voguish Prune	53	2	B
<b>Linear Hush</b>			
5526 Ironside Oak	57	2	A
<b>Horizontal Hush</b>			
5525 Hickory Oak	58	2	B
<b>Wooden Symphony</b>			
695 Bavarian Beech	68	1	A
711 Siam Teak	68	1	C
728 European White Elm	62	1	B
738 Oak	60	1	B
749 Sapele	63	3	D
766 Rich Walnut	64	3	C
770 Douglas Fur	68	2	D
791 Milwaukee Walnut	60	2	A
793 Antique Oak	66	3	A
5003 Phillipine Teak	61	3	C
5004 Lorraine Walnut	62	2	A
5006 Thansau Maple	61	1	B
5007 White Larch	66	2	A
5009 Larch Wood	65	3	B
5018 Brooks Walnut	64	1	D
5026 Sulphur Spring	66	2	B
5049 Red Oak	67	1	D
5050 Umber Oak	64	3	D
<b>Solids Textured</b>			
<b>Super Gloss</b>			
101 White (SGL)	85	1	A
107 Wool (SGL)	85	1	B
124 Mysore Ivory (SGL)	85	1	C
217 Light Orange (SGL)	85	2	C
229 Yellow (SGL)	85	2	D
401 Black (SGL)	85	3	D
<b>SOLIDS STANDARD</b>			
<b>Popular Colors</b>			
101 White	87	1	A
107 Wool	87	1	C
124 Mysore Ivory	87	1	D
261 Dark Grey	87	2	C
270 Silver Grey	87	2	B
401 Black	87	2	D
<b>Solid Symphony</b>			
132 Cyclone	96	1	C
133 Moon Stone	95	1	A
134 Mud Ash	95	3	B
141 Beige	95	2	A
173 Barbie Pink	88	1	B
181 Chocolate	95	3	C
201 Maroon	93	3	B
204 Red Dynasty	93	1	B
207 Divine Yellow	94	3	C
217 Light Orange	94	1	B
229 Yellow	94	2	C
247 Dutch Green	91	3	D
259 Lime	91	2	A
262 Grey	90	1	B
266 Ash Grey	90	2	C
274 Pine Nut	96	3	A
275 Pearl Grey	90	1	A
280 Blue	92	1	D
291 Electric Blue	92	2	D

# INDEX

## GREENLAM XL RANGE - 5' X 12'

Design No. & Name	Page No.	Row	Column
<b>Abstracts</b>			
<b>Moonstruck Pearl</b>			
923 Meta Silver	12	2	B
929 Metaline Grey	12	3	C
<b>WOODS STANDARD</b>			
<b>Horizontal Hush</b>			
5525 Hickory Oak	58	2	B
<b>Wooden Symphony</b>			
682 Hiland Pine	65	2	A
719 Mangfall Beech	63	2	D
738 Oak	60	1	B
749 Sapele	63	3	D
770 Douglas Fur	68	2	D
5003 Phillipine Teak	61	3	C
5006 Thansau Maple	61	1	B
5018 Brooks Walnut	64	1	D
<b>Solids STANDARD</b>			
<b>Popular Colors</b>			
124 Mysore Ivory	87	1	D
261 Dark Grey	87	2	C
271 Light Grey	87	2	A
401 Black	87	2	D
<b>Solid Symphony</b>			
121 Ivory	96	2	B
133 Moon Stone	95	1	A
134 Mud Ash	95	3	B
141 Beige	95	2	A
163 Bay	96	3	C
166 Blush Pink	93	3	C
173 Barbie Pink	88	1	B
217 Light Orange	94	1	B
230 Cream Yellow	94	1	C
257 Olive	91	3	C
259 Lime	91	2	A
268 Dust	90	2	B
275 Pearl Grey	90	1	A
284 Ozone	89	3	B
291 Electric Blue	92	2	D
297 Blue Galaxy	89	3	C

- 📌 Design available in Post Forming grade also
- 📌 Design also available in 4.25' x 10'
- 📌 Greenlam Doors Special also available in 3' x 7'
- 📌 Design also available in 5' x 12'
- 📌 Compact Laminates also available in 6' x 12'
- 📌 New Design

# GREENLAM DOORS SPECIAL RANGE - 3' X 7'

Design No. & Name	Page No.	Row	Column
<b>Abstracts</b>			
<b>Mesh</b>			
5566 Clear Mesh*	7	1	A
5567 Grey Mesh*	7	1	B
5568 Smoky Mesh*	7	2	A
5569 Earthen Mesh*	7	2	B
5570 Bronze Mesh*	7	2	C
<b>WOODS STANDARD</b>			
<b>Linear Hush</b>			
5526 Ironside Oak	57	2	A
<b>Horizontal Hush</b>			
5522 Horizontal Ebony	58	4	A
5525 Hickory Oak	58	2	B
<b>Wooden Symphony</b>			
608 American Walnut	64	1	B
633 Sunset Beech	67	3	D
652 Wild Cherry	63	1	D
676 European Walnut	62	1	C
682 Hiland Pine	65	2	A
683 Golden Maple	61	1	A
685 Swiss Pear	61	3	A
693 Vancouver Maple	63	3	A
701 Rising Beech	61	1	C
702 Cherry	67	2	C
711 Siam Teak	68	1	C
718 Silver Maple	65	2	C
731 Wenge	60	2	C
750 White Beech	67	2	D
766 Rich Walnut	64	3	C
770 Douglas Fur	68	2	D
791 Milwaukee Walnut	60	2	A
5003 Phillipine Teak	61	3	C
5007 White Larch	66	2	A
5009 Larch Wood	65	3	B
5018 Brooks Walnut	64	1	D
5049 Red Oak	67	1	D
5050 Umber Oak	64	3	D
<b>SOLIDS STANDARD</b>			
<b>Popular Colors</b>			
101 White	87	1	A
107 Wool	87	1	C
124 Mysore Ivory	87	1	D
261 Dark Grey	87	2	C
270 Silver Grey	87	2	B
<b>Solid Symphony</b>			
132 Cyclone	96	1	C
133 Moon Stone	95	1	A
141 Beige	95	2	A
152 Almond	96	1	B
204 Red Dynasty	93	1	B
291 Electric Blue	92	2	D

- 📌 Design available in Post Forming grade also
- 📌 Design also available in 4.25' x 10'
- 📌 Greenlam Doors Special also available in 3' x 7'
- 📌 Design also available in 5' x 12'
- 📌 Compact Laminates also available in 6' x 12'
- 📌 New Design

# INDEX

## GREENLAM COMPACT LAMINATE RANGE (6' X 6' / 6' X 12')

Design No. & Name	Page No.	Row	Column
<b>Abstracts</b>			
<b>Moonstruck Pearl</b>			
923 Meta Silver	12	2	B
929 Metaline Grey	12	3	C
<b>WOODS TEXTURED</b>			
<b>Raw Silk</b>			
682 Hiland Pine (RSL)	42	1	C
738 Oak (RSL)	42	1	B
5003 Phillipine Teak (RSL)	42	3	C
<b>Horizontal Hush</b>			
5525 Hickory Oak	58	2	B
<b>Wooden Symphony</b>			
682 Hiland Pine	65	2	A
719 Mangfall Beech	63	2	D
738 Oak	60	1	B
749 Sapele	63	3	D
770 Douglas Fur	68	2	D
5003 Phillipine Teak	61	3	C
5006 Thansau Maple	61	1	B
5018 Brooks Walnut	64	1	D
<b>Solids Textured</b>			
<b>Raw Silk</b>			
401 Black (RSL)	79	1	B
<b>SOLIDS STANDARD</b>			
<b>Popular Colors</b>			
124 Mysore Ivory	87	1	D
261 Dark Grey	87	2	C
271 Light Grey	87	2	A
401 Black	87	2	D
<b>Solid Symphony</b>			
121 Ivory	96	2	B
133 Moon Stone	95	1	A
134 Mud Ash	95	3	B
141 Beige	95	2	A
163 Bay	96	3	C
166 Blush Pink	93	3	C
173 Barbie Pink	88	1	B
217 Light Orange	94	1	B
230 Cream Yellow	94	1	C
257 Olive	91	3	C
259 Lime	91	2	A
268 Dust	90	2	B
275 Pearl Grey	90	1	A
284 Ozone	89	3	B
291 Electric Blue	92	2	D
297 Blue Galaxy	89	3	C



Size Availability in Finishes						
Finish/Size	Abbreviation	GREENLAM DOOR SPECIALS (3' X 7')	GREENLAM STANDARD (4' X 8')	GREENLAM "L" Range (4.25' X 10')	GREENLAM "XL" Range (5' X 12')	GREENLAM COMPACT LAMINATES
ALLURING ALLIGATOR	AGR	-	✓	-	-	-
BLAZING DELIGHT	BLD	-	✓	-	-	-
CARAVAN LEATHER	CRL	-	✓	-	-	-
CHASED WOOD	CHS	-	✓	-	-	-
COUNTRY WOOD	CTR	-	✓	-	-	-
EDGY ASH	ASH	-	✓	-	-	-
GLOSS	GLS	-	✓	✓	✓	-
HANDSCRAPPED	HSC	-	✓	-	-	-
MATT	MAT	-	✓	✓	-	-
NAPPA LEATHER	NLT	-	✓	-	-	-
ONDA HORIZONTAL	ODH	-	✓	-	-	-
ONDA VERTICAL	OND	-	✓	-	-	-
PACIFIC TRAIL	PTR	-	✓	-	-	-
PARALLEL STREAKS	PST	-	✓	-	-	-
QUARTER CUT OAK	QOK	-	✓	-	-	-
RAFFIA	RFF	-	✓	-	-	-
RAW SILK	RSL	-	✓	-	-	✓
RETRO	RTR	-	✓	-	-	-
RUFFLED LEATHER	RFT	-	✓	-	-	-
STONE	STN	-	✓	-	✓	-
SUEDE	SUD	✓	✓	✓	✓	✓
SUMMER BLOOMS	SBL	-	✓	-	-	-
SUPER GLOSS	SGL	-	✓	-	-	-
SUPER SUEDE	SSD	-	✓	-	-	-
TECHNO STEEL	TST	-	✓	-	-	-
TEXMEX	TXM	-	✓	-	-	-
WACKY WICKER	WWR	-	✓	-	-	-
ZERO REFLECTION	ZRL	-	✓	-	-	-

Note: All Samples are in Suede finish unless mentioned.

- 🏠 Design available in Post Forming grade also
- 🚪 Greenlam Doors Special also available in 3' x 7'
- 🏠 Compact Laminates also available in 6' x 12'
- 🏠 Design also available in 4.25' x 10'
- 🏠 Design also available in 5' x 12'
- 🆕 New Design

#### LIABILITY

Whereas the products are manufactured to exacting standards, the nature of the application procedure is beyond our control. While we are pleased to offer advice, we cannot guarantee the finishing results or accept liability for it. All information is provided in good faith but without warranty expressed or implied. The liability of the Company is limited to replacement of defective goods only. It is therefore necessary that prior to any commercial use you should conduct your own tests to evaluate efficacy of the product under the particular condition for its intended use.

## TECHNICAL SPECIFICATIONS

Properties	Specified values as per IS:2046-1995, TYPE S,HGS	Greenlam conforms	Specified values as per IS:2046-1995, TYPE S,HGS	Greenlam Supertuf Conforms
Thickness	1.00mm (+,-0.10mm)	✓	1.50mm (+,-0.15mm)	✓
Resistance to surface wear	350 (revolution)	✓	350(revolution)	✓
Resistance to immersion in boiling water				
-Mass increase(%)	10.0 (maximum)	✓	7.5(maximum)	✓
-Thickness increase(%)	11.8 (maximum)	✓	8.5(maximum)	✓
-Appearance	Not worse than 4	✓	Not worse than 4	✓
Resistance to dry heat 180°C	Not worse than 4	✓	Not worse than 4	✓
Dimensional Stability at deviated temp.				
-Longitudinal(%)	0.55 (maximum)	✓	0.44(maximum)	✓
-Transverse(%)	1.025 (maximum)	✓	0.86(maximum)	✓
Dimensional stability at 20°C				
-Longitudinal(%)	0.375 (maximum)	✓	0.31(maximum)	✓
-Transverse(%)	0.60 (maximum)	✓	0.49(maximum)	✓
Resistance to impact by small diameter ball	20 N (minimum)	✓	20 N (minimum)	✓
Resistance to cracking	Not worse than 4	✓	Not worse than 4	✓
Resistance to scratching	2 N (minimum)	✓	2N (minimum)	✓
Resistance to staining				
Group 1&2	Not worse than 5	✓	Not worse than 5	✓
Group 3&4	Not worse than 4	✓	Not worse than 4	✓
Resistance to color change(wool standards)				
-In Xenon arc light	Not worse than 6	✓	Not worse than 6	✓
-In enclosed Carbon arc light	Not worse than 5	✓	Not worse than 5	✓
Resistance to cigarette burns	Not worse than 3	✓	Not worse than 3	✓
Resistance to steam	Not worse than 4	✓	Not worse than 4	✓
Appearance	Should be free from foreign particles	✓	Should be free from foreign particles	✓

GREENLAM WITH METASHIELD: A unique technology, developed in house through extensive R&D on specially formulated reactive resin, imparting a high density protective surface which can withstand all punishment. Greenlam with METALSHIELD Decorative Laminates are available in thickness of 1.00mm and also in 1.50mm. Special thickness can be made available on request.

Greenly warrants that all its products are free from manufacturing defects and perfectly fit for use under normal conditions. In case of any claims, the liability of the company is however limited to the cost of the product only.

NOTE: The samples shown here only indicative of the color patterns and finishes available.

\*Greenlam is available in 1.00mm Greenlam supertuf is available in 1.5mm



From Greenlam Universe  
*Speciality Products*



# MIRROR TRANCE

LAMINATES THAT FLAUNT A MIRROR LIKE FINISH.

HORIZONTAL GRADE HI GLOSS AVAILABLE IN INDIA FOR THE FIRST TIME

OFFERS AN ABRASION OF 400 CYCLES AS COMPARED TO 150 CYCLES OFFERED IN REGULAR HI-GLOSS LAMINATES

MIRROR LIKE SHEEN

AVAILABLE IN 10 DIFFERENT COLOURS

1 MM THICKNESS

HORIZONTAL APPLICATION AREAS: KITCHEN COUNTERTOPS, TABLE TOPS, BAR COUNTERS

VERTICAL APPLICATION AREAS: PANELS, WALLS, DOORS, CABINETS



# UNICORE

HIGH PERFORMANCE LAMINATES MADE WITH SAME COLOUR DECORATIVE PAPERS SO THAT THERE ARE NO DARK EDGES.

ONE SOLID COLOUR NOT ONLY ON SURFACE BUT IN THE CORE OF THE LAMINATE AS WELL

HORIZONTAL GRADE HI GLOSS UNICORE AVAILABLE IN INDIA FOR THE FIRST TIME

OFFERS ABRASION RESISTANCE OF MORE THAN 3000 CYCLES AS COMPARED TO 150 ABRASION CYCLES OF REGULAR HI-GLOSS LAMINATES

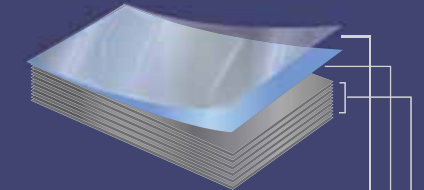
MIRROR LIKE SHEEN

DISCARDS DARK EDGES

AVAILABLE IN 4 DIFFERENT COLOURS

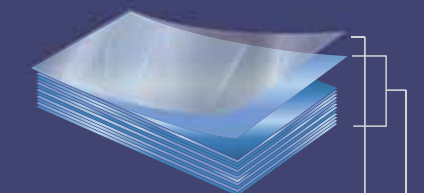
0.8 MM THICKNESS

APPLICATION AREAS: CABINETS, RESIDENTIAL AND COMMERCIAL COUNTERTOPS, DOORS, EXHIBITS, SIGNAGES AND FURNITURE



Regular Laminate Construction

Tissue overlay (for print decors) impregnated with melamine resins  
 Solid or print design paper layer impregnated with melamine resins  
 Kraft paper layers  
 Kraft paper layers impregnated with melamine resins



Unicore Construction

Tissue overlay (for print decors) impregnated with melamine resins  
 Solid or print design paper layer impregnated with melamine resins

# CUSTOM LAMINATES

These are the future of laminates. Because they are a reflection of customer's own taste and preferences. This can personalise the mood of any space including your homes and even coffee bars, lounges and other retail zones.

# GROOVY DIGITAL

LAMINATES THAT USE DIGITAL TECHNOLOGY TO DELIVER UNIQUE COLOURS IN SUPERIOR PRINT QUALITY.

- 1 Designs inspired out of the latest trends in parallel interior products like wallpapers, upholstery and paints.
- 2 Colours are delivered with unmatched precision.
- 3 Delivers single linear structure across two or more continuous sheets without breakage of patterns.
- 4 A wide and extensive range of applications.



## CUSTOMIZE LAMINATES WITH:

- Corporate Logos
- Brand Campaigns
- Corporate Branding
- General Graphic Art
- Pictures and Names

THE DESIGN, FINISH & SIZE CAN ALSO BE SELECTED FROM THE AVAILABLE FINISHES AND SIZES:

- 4'X8'
- 4.25'X10'
- 5'X12'

AS PER CUSTOMER'S REQUIREMENT.



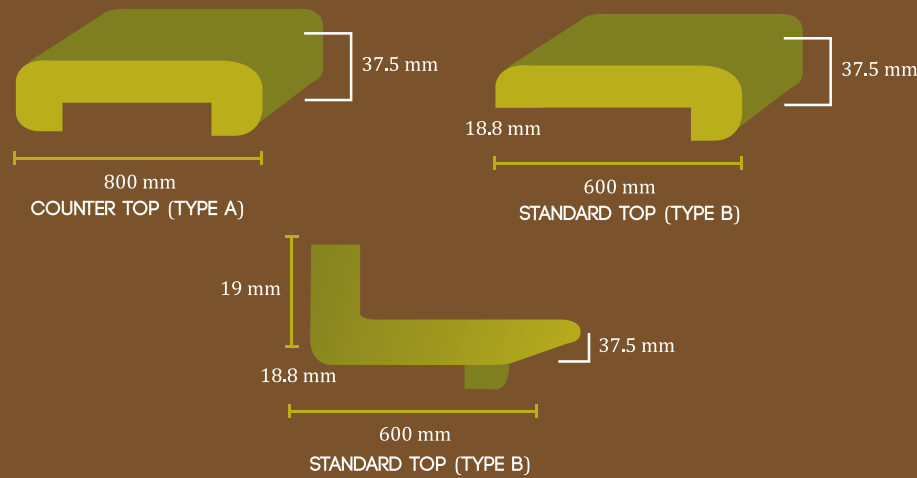


We BEND it LIKE...  
none ELSE DOES

## POST FORMING LAMINATES

Laminates that take any shape you desire, while retaining all the properties of standard grade laminates. They are intended for both vertical and horizontal applications, wherever it is desirable to wrap the laminate in a simple radius around the edges in a curved form. They can be bent without losing the grain or pattern. Available in thickness of 0.6 mm, in woods, solids and metallic shades.

### POSTFORM WORKTOPS



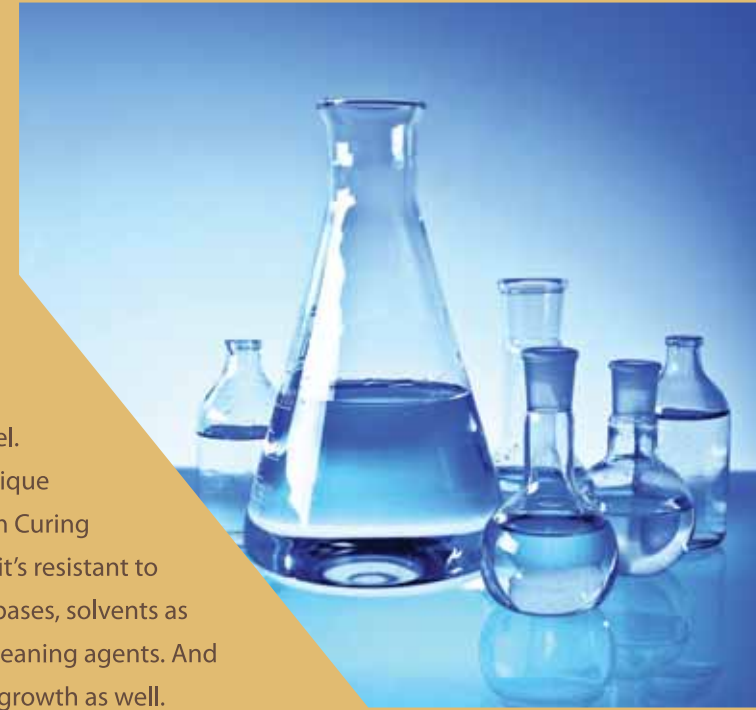
### POSTFORM DOORS



# Compact Grade Offerings

## CHEMICAL RESISTANT COMPACT LAMINATES

This chemicals-resistant compact laminate is designed specifically to shield surfaces from chemical abuse. Ideal for horizontal applications, it is indeed a durable and cost effective substitute to epoxy, slate and stainless steel. Manufactured with the unique patented Electron Beam Curing (EBC) Acrylic Resins; it's resistant to harsh chemicals, bases, solvents as well as harsh cleaning agents. And to bacterial growth as well.



LabGuardian™  
Chemical Resistant Compact Laminates

## Compact Grade

## BEING THICK-SKINNED, PAYS OFF

Ideal for both horizontal and vertical applications where the surface should be functional, durable and also decorative. Especially for Panelling, Lab furniture, Worktops, Modular Restroom Cubicles. Produced under strict process control parameters, it's available in various thicknesses (varying from 4mm to 18mm) and various sizes. And also in customized sizes and thicknesses.



## RESTROOM CUBICLES

Customised and complete rest room cubicles range, it's a high durability and hygiene product for all public spaces. They come with a warranty of 10 years and don't just give restrooms a classy finish but also are maintenance-free.



[www.sturdo.co.in](http://www.sturdo.co.in)





# GREEN FIRE RETARDANT LAMINATES

**SMOKING IS PROHIBITED. EVEN FOR THE FIRE.**

A result of extensive research, these are treated with imported fire retardant chemicals that minimize smoke emission and delay the temperature rise, making it more resistant to fire and ill effects. It's indeed a safe and recommended product for kitchens, cinema halls, malls etc. available in your choice of colour.



# COMPOSITE GRADE PANELS

Thinner alternatives of compact laminates, Composite Panels are as durable and also as sturdy as plyboards. It is designed to be particularly resistant to degradation, scratch and stain; to be perfect for bathroom doors, workstation partitions and other self-supporting vertical applications.



**GREENLAM**  
COMPOSITE PANEL



# Chalk & Marker Grade

**ALL 'BOARD' ROOMS HAVE A REASON TO SMILE**

Here're two premium ranges of laminates available in a variety of colours, offering lighter and more dependable substitutes for traditional ceramic boards in schools and corporate houses. While the Chalk board allows a long lasting sheen on surface for smooth use of chalk, the Marker board offers a surface perfect for markers. These laminates turn spotless in a single wipe and perform well for a long time, even at low maintenance.



# Green Decoliner

NO HIDING IN CLOSETS ANYMORE

Unique and low maintenance laminates that allow you to make the insides of your furniture, like cabinets, cupboards and wardrobes, beautiful too. Available in 0.7mm thickness, 6 different shades and only the matte finish.



# DOOR SPECIALS (7X3 PANELS)

A range so perfectly fit for your doors. Available in 3ftx7ft size, these laminates not only clad your doors seamlessly but also make them look beautiful. This special size brings down the wastage levels and also saves time.



**GREENLAM**  
SWITCH BOARD PANEL



Green Switch Board Panels are manufactured under strict process control; by layering phenolic resin impregnated 'A' grade kraft paper with melamine impregnated decorative base paper. These switch board panels are available in 2.5mm & 3.00mm thickness. So now, enhance your interiors to an unexpected level.